

*Ex  
Libris*

The nineteen hundred and fifty-four senior class of Sacred Heart Academy presents the seventh annual Cor Jesu.





*Cor  
Jesu*

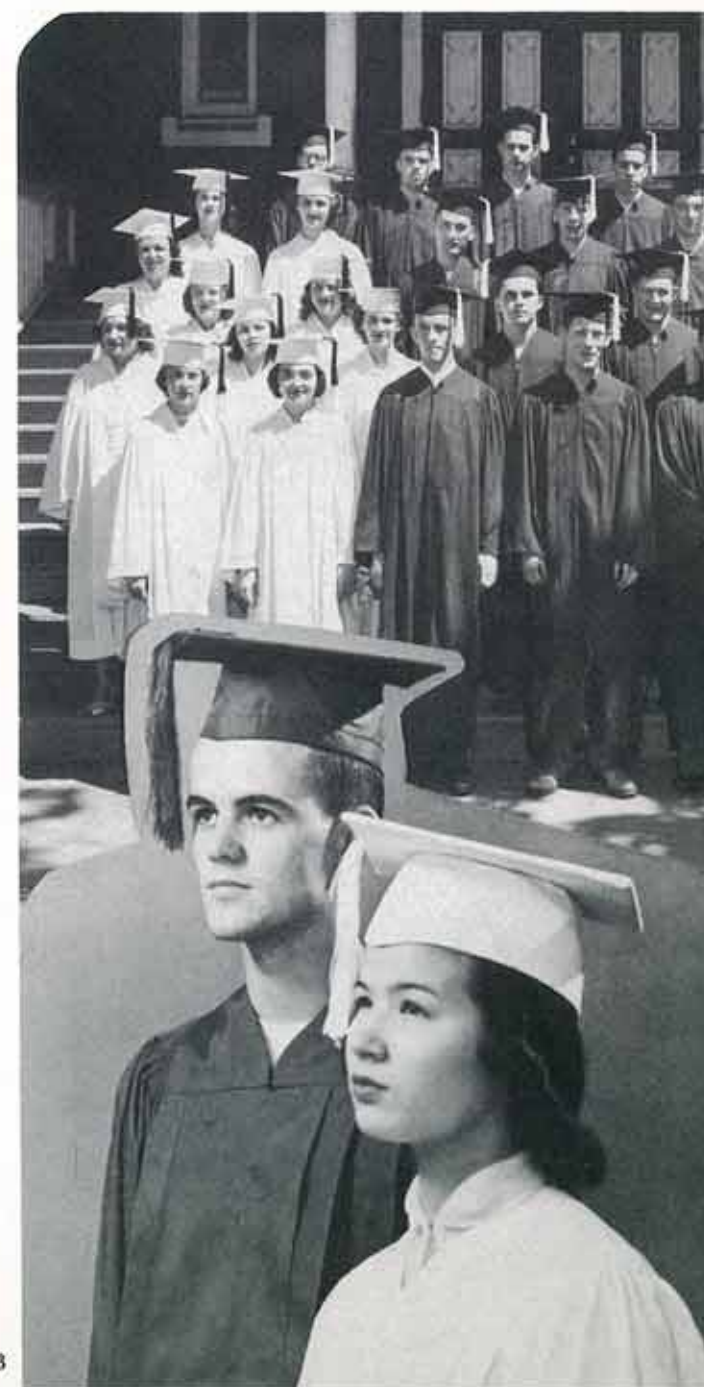
The Latin title of our yearbook, Cor Jesu, was appropriately chosen by the class of forty-eight, the first publishers. It signifies Heart Of Jesus, or Sacred Heart, the name of our parish church and school.

*Theme  
America's Hope—  
Youth with Faith*

### *Contents*

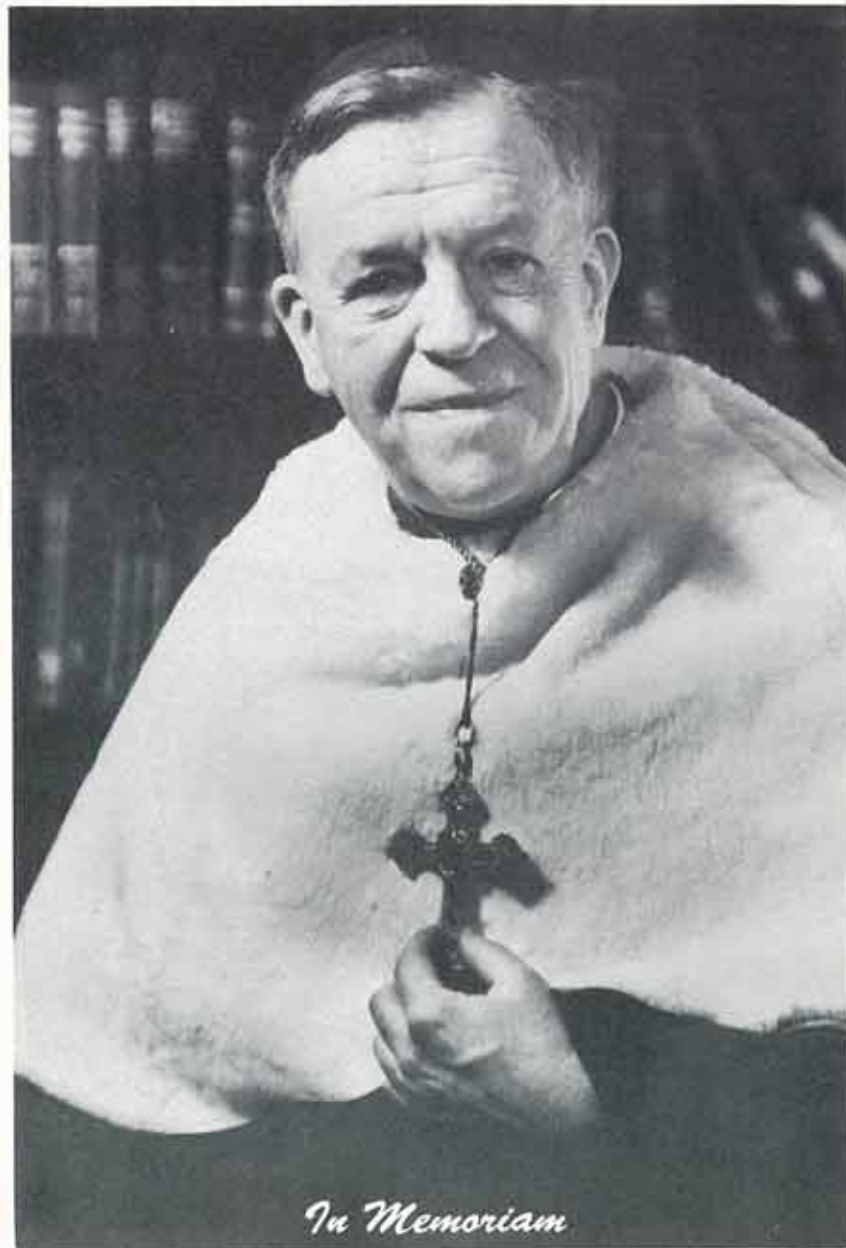
	Pages
Introduction . . . . .	1-6
Faith in God . . . . .	7
Sodality . . . . .	8-10
Student Retreat . . . . .	11
Religious Activities . . . . .	12
Faith in Others . . . . .	13
Homecoming . . . . .	14-17
Social Events . . . . .	18-22
Advertising . . . . .	61-72
Faith in Unity . . . . .	23
Sports . . . . .	24-34
Faith in Ourselves . . . . .	35
Underclassmen . . . . .	36-41
Seniors . . . . .	42-51
Music . . . . .	52-53
Classes . . . . .	54-59
Student Council . . . . .	60

*Faith: the key to peace*



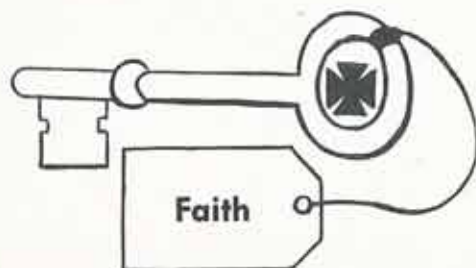


*I will go unto the altar of God . . . . .*



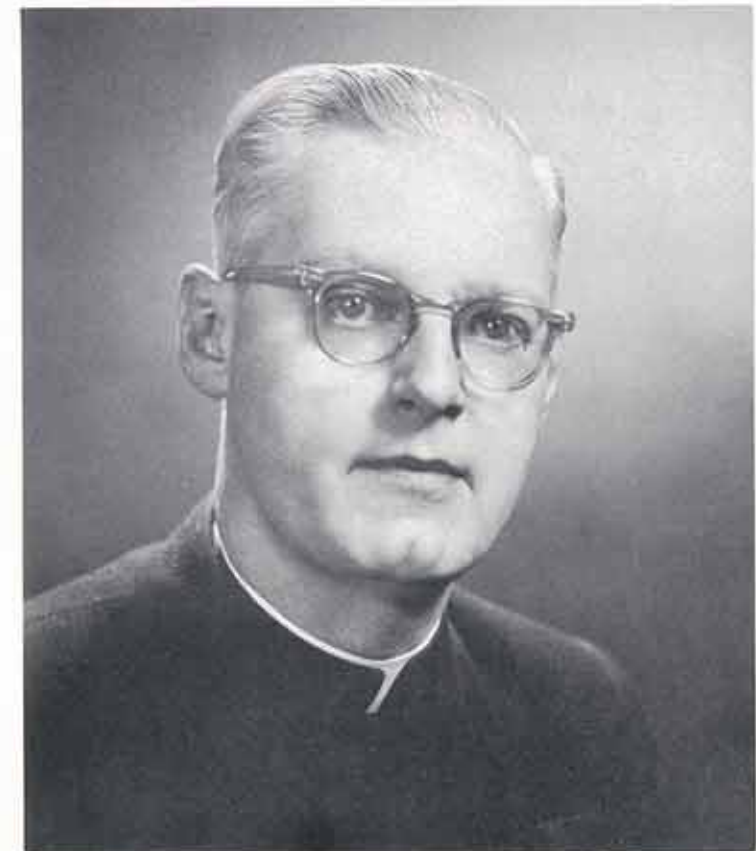
*In Memoriam*

**The Most Reverend Francis J. Haas, D.D.**  
A zealous leader of souls . . . . a prelate of Christ-like charity . . . . a great and noble citizen was called by God on August 29, 1953, in the tenth year of his episcopate.



*. . . . Faith in Our Leaders*

*. . . to God who giveth joy . . .*



Reverend Edward N. Alt  
Pastor of Sacred Heart Church



Reverend Walter Jude  
Assistant Pastor



Reverend Francis Karl  
Assistant Pastor





### *Church Organists*

Kathlyn Kisby, Margie McDonald, Sally Johnson, Jean Ann Hackett, Mary Jo Hackett, and Sue Harrigan alternate playing for the daily Mass, eight o'clock Sunday Mass, and for occasional services.



### *Knights of the Altar*

Sophomore, junior, and senior altar boys serve frequently during their final high school years, as they uphold the honor of assisting the priest at the Holy Sacrifice of the Mass.

### *Freshman Choir*

"Practice makes Perfect" at least that's what these freshman lassies are hoping as they prepare to sing the Orbis Factor Mass.



## *Social*



*Faith in Others*





The crowning of the statue of the Blessed Virgin by Co-prefects Jean Lapham and Tom Rush climaxed the Third Annual May Day Youth Rally.



Sodality secretary, Jo Ann English; Co-prefect, Kay Theisen, and treasurer, Jack Sowle go over the sodality accounts.



Bill Quinlan, Prefect of the Sodality checks the Annual May Day plans, laid out by Co-prefect, Mary Jo Murphy.



Father Farquarson receives the sophomores into the Sodality, December 7, 1952.

Sacred Heart's participants in the SSCA take time out for a chat with their favorite author and adviser, Rev. Janiel A. Lord, S.J.







## Committees

Juniors, Sally Johnson and Beverly Knapp make preparations for a stamp collection to benefit the foreign missions.



Eucharistic officers, Thomas Corcoran, June Radey and Marian McGuire, seniors, discuss ways to increase daily Communion and further devotion to the Blessed Sacrament.

Decorating the sodality bulletin board is the sophomore vocation committee, Geraldine Epple, Kay Breidenstein, and Bill Fisher.

Preparing for a Triduum for the feast of the Immaculate Conception is Our Lady's committee, freshmen Judy Hively and Paul Deni.



Rev. Cornelius Ryan, C.M.

## Retreat

Academy Sodalists prepare for the Marian year by participating in a Student Retreat, directed by Rev. Cornelius Ryan, C.M. The three days, spent in silence, included daily Holy Communion, conferences, spiritual reading, station of the Cross and recitation of the rosary and litany. The retreat was brought to a close when all the students were enrolled in the Confraternity of the Miraculous Medal.





## Faculty

### *"Go forth and teach"*

Father Edward N. Alt . . . . .	Superintendent
Father Francis Karl . . . . .	Religion, Athletic Director
Sister Mary Richard, O. P. . . . .	Principal, Math
Sister Mary Grace, O. P. . . . .	English
Sister Frances Raphael, O. P. . . . .	English, Latin
Sister Mary Celine, O. P. . . . .	Commerce
Sister Mary Cecile, O. P. . . . .	Science
Mr. James Schultz . . . . .	Social Studies, Coach
Sister Henry Suso, O. P. . . . .	Glee Club, Music

Academy teachers assemble in the library for a faculty meeting.



## Spiritual



*Faith in God*

## Homecoming Queen . . . . .



The most glamorous attraction of Sacred Heart Academy's Homecoming was Queen Mary Jo Murphy and her court composed of senior, Anne Pety; junior, Kay Martin; sophomore, Jo Ann English; and freshman, Jeanne Fox.

Queen Mary Jo



Sweethearts of S.H.A. - Irish lasses all. These regal princesses were chosen by popular vote to reign over the Homecoming festivities.





## Pep Rally

The weekend festivities were sparked off by an enthusiastic pep rally, sponsored by the senior class.



A mock parade highlighted the pep rally.

... Got the pep! Got the steam! ...



Coach Jim Schultz accurately predicts victory over SS. Peters and Paul's.



Yea, Team!



Compliments of . . . . .  
*Taylor's Super Service*

These smiling Irish sweethearts added to the gaiety of the colorful parade.

## Parade

First prize winner in the parade was this original sophomore creation.



A sparkling float with its clever theme, "A Toast from the Host," won second prize for the seniors.





The queen and her court dine in regal style as they help celebrate with the victorious team.



Larry Lapham glows with pride as he dances with royalty.

Surrounding the royal court, assistant coaches Virgil Lewis and Gil Bovan; Russell Hesch, Joe Breidenstein, Pat Corcoran, Dave Sowle, Athletic President Russell Hesch, Sr., Paul Deni, Coach Schultz, Father Alt, and Father Karl smile on the newly-crowned queen.



Mrs. James Knapp and Mrs. James McKenna give service with a smile.



Kay Theisen, Kay Martin, Mary Ann Gris-dale, and Sheila Arnold puzzle out J-Hop theme.



Tickets and publicity is the job of Beverly Knapp, Sally Johnson, Carol Moore, and Katherine Gross.

## J-Hop

Winter Wonderland served as the magic password that opened the social events of the Christmas season for Irish knights and their ladies. Masterful magicians with the stroke of a wand transformed the Mt. Pleasant gym into an enchanting scene of snowy charm.

Pre-hop events included a Sodality style show displaying pretty and proper gowns for Catholic young ladies and numerous committee meetings for the junior magicians.



The Christmas angel smiles on student models at the Sodality Style Show displaying proper attire for the J-Hop.







### *Junior-Hop*

Twinkling eyes and blithe laughter lend brilliance and warmth to the night's gaiety. Faith in fellow students and in our neighbor students from Mt. Pleasant High made the dance a sparkling success.



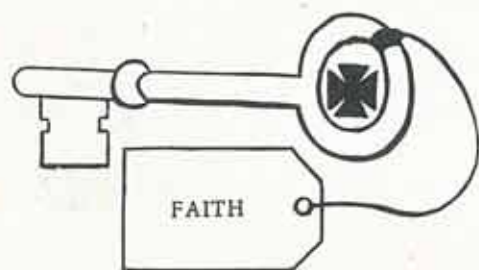
### *Junior-*

### *Senior*

### *Banquet*



Juniors of '53 lavishly fête the seniors at traditional J-S banquet.





# Athletic Banquet



The annual Athletic Banquet served as the perfect climax for Sacred Heart Academy's 1953 undefeated football season. Highlighting the event was the conferring of special laurels upon the ten senior Irish gridders who formed the nucleus of this year's outstanding squad. Special guests included Fathers Alt, Karl, Jude, Brannigan, and Neubecker; Nick Kerbeway, General Manager of the Detroit Lions; Russell Hesch, Association President; L. N. Sweeney, Lyle Bennett, Joseph Carey, Bill Kelly; and Russell Le Cronier, Superintendent of the Mt. Pleasant public schools; Coaches Jim Schultz, Vergil Lewis, and Gil Bovan; and Ted Sowle, toastmaster.



# Sports



Faith in Unity



## Graduating



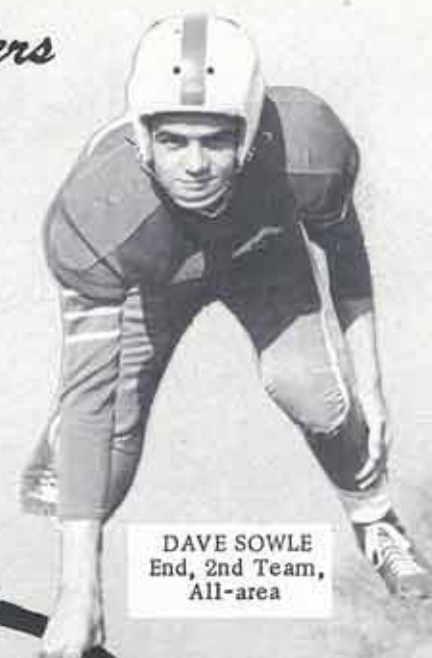
FRED CASHEN  
Fullback, All-area  
2nd Team



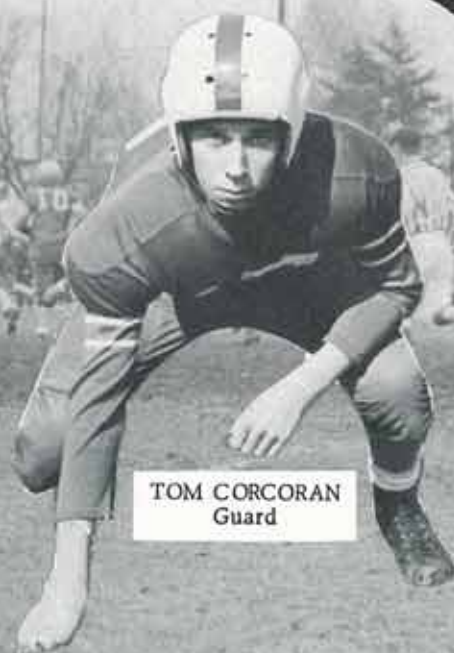
JIM MCKENNA  
End, All-area, All-  
league, All-state



CONRAD ENGLISH  
Tackle, All-area,  
All-league



DAVE SOWLE  
End, 2nd Team,  
All-area



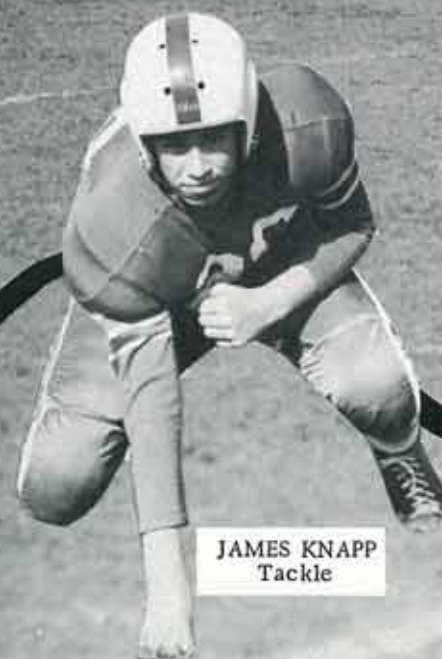
TOM CORCORAN  
Guard



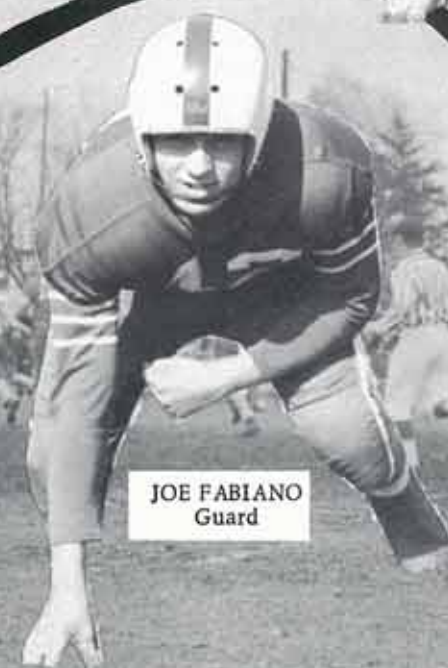
BILL QUINLAN  
Halfback, All-  
league, All-area,  
All-state, Honor-  
able Mention



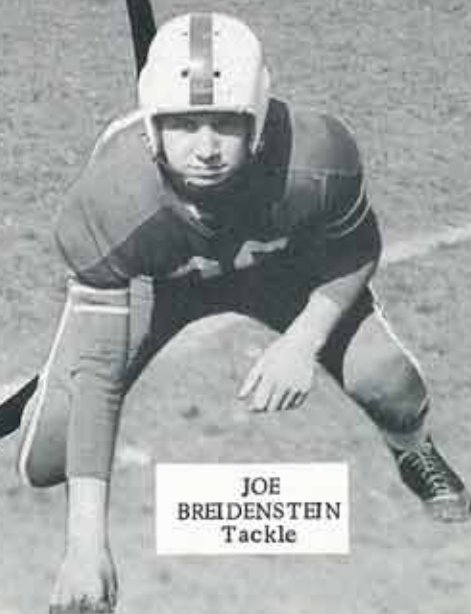
EDDIE OSOSKI  
Halfback  
All-league



JAMES KNAPP  
Tackle



JOE FABIANO  
Guard



JOE BREIDENSTEIN  
Tackle

## Gridlers





#### S. H. A. 18--Saginaw SS. Peter and Paul's 14

The fired-up Irish eleven spilled S.S. Peter and Paul's Saginaw, 18 to 14. Ottney passed 15 yards to Ososki, who then ran another 50 yards for the T. D. In the second quarter Ottney tossed 27 yards to Quinlan for a T. D. The Midgets scored just before the half. They scored again in the third quarter, but Cashen scored on a line play in the last three minutes. Irish defensive play was the key to the game as the Midgets were permitted in Academy territory only three times: twice to score and a third time to be stopped on the 10-yard line.



#### S. H. A. 19---Holy Rosary 13

It took high looping passes by quarterback Maday of Holy Rosary to cross into Irishland after 144 minutes of unscored-upon play by the fighting Irish. Sacred Heart moved fast for the first T. D. when Ososki punched the line for the final yard of a 76-yard sustained drive by the Irish. Late in the second period, Kane flipped a short pass to Grisdale, who raced 28 yards to score Sacred Heart's second T. D. Holy Rosary scored both its T. D's, on passes with Maday doing the pitching. In the final quarter Grisdale picked up some good blocking from English, Sowle and Fabiano to sail 25 yards for the final Irish score.

#### S. H. A. 12---Bay City St. James 0

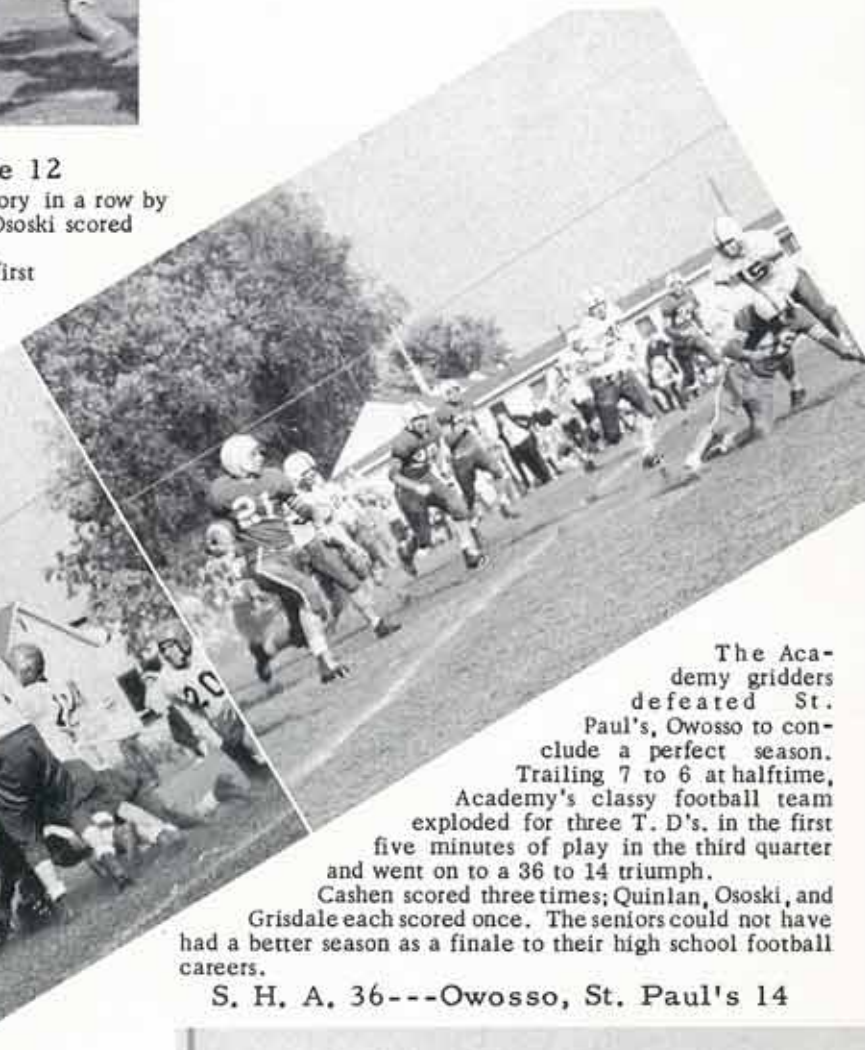
The fighting Irish opened their fine '53 season with 12-0 shutout victory over the fighting Irish of St. James Bay City.

St. James battled the Irish to a 0-0 tie in the first half, but the aroused Irish came out the second half and in the first two minutes of play shook Bill Quinlan loose for their first T. D. Midway in the final quarter Fred Cashen bulled his way over 2 yards for the final score.

#### S. H. A. 36---Essexville 12

Sacred Heart chalked up its tenth victory in a row by downing Essexville St. John 36--12 (while Ososki scored four T. D's).

Sacred Heart took the lead early in the first quarter with Quinlan scoring first from the four; later Ososki tallied his "first of four", also from the 4-yard line. Ososki then went on to score 3 more T. D's., (one a 5-yard pass from Ottney and the others coming on T. D. jaunts of 60 and 65 yards.



It was a great day for the Irish as they utterly rolled over Saginaw St. Mary's 51 to 7. Academy's offense was in high gear as they scored 12 points in the first-half and then came back and stunned the Maroons with a barrage of 6 additional T. D's. in the last half. Leading Sacred Heart's defense were ends Sowle and McKenna, tackles English and Breidenstein with guards Fabiano and Corcoran.

#### S. H. A. 51---Saginaw St. Mary's 7



#### S. H. A. 30---Bay City St. Mary's 0

Sacred Heart Academy waltzed to their third consecutive shutout of the 1953 season with a 30-0 victory over Bay City St. Mary's.

Quinlan and Gabrysiak provided the scoring punch in the first half with Quinlan, two and Gabrysiak, one for a comfortable 18-0 lead at the half.

The second half, with Grisdale and Ososki leading the way, was also dominated by the Irish. Grisdale shot through a gaping hole in the center of the line and outraced the secondary for a 68-yard scoring jaunt. Ososki punched over from the six for Academy's final T. D.

#### S. H. A. 19---Bay City Visitation 0

Sacred Heart made a successful debut in V. P. L. football conference by thumping Bay City Visitation 10-0 in perfect football weather.

After a scoreless first quarter, Quinlan completed a 60 yard march for the Irish as he banged off tackle 6 yards to the end zone. Later in the same period Quinlan tallied again, this time from the five. In the final quarter Ososki shot through a gaping hole in the left side of the visitation line, picked up 2 good blocks by Fabiano and all-state end, Jim McKenna, and raced 35 yards to score.

Jake Grisdale and Quinlan were given the disappointments of the day as Grisdale raced 45 yards to score, and Quinlan 85. The scores were nullified by penalties.

The Academy gridders defeated St. Paul's, Owosso to conclude a perfect season. Trailing 7 to 6 at halftime, Academy's classy football team exploded for three T. D's. in the first five minutes of play in the third quarter and went on to a 36 to 14 triumph. Cashen scored three times; Quinlan, Ososki, and Grisdale each scored once. The seniors could not have had a better season as a finale to their high school football careers.

#### S. H. A. 36---Owosso, St. Paul's 14





## Valley Parochial League Champs



Row 1 (l to r): Manager D. Donoghue, J. Graham, D. Theisen, G. Donoghue, J. Grisdale, P. Gaudard, J. Farnan, P. Deni, J. Theisen. Row 2: T. Corcoran, B. Percha, J. Gabrysiak, F. Cashen, Coach Jim Schultz, J. Ottney, E. Ososki, J. Breidenstein, P. Corcoran, L. Wezensky. Row 3: Ass't Coaches G. Bovan and V. Lewis; T. Cashen, J. Sowle, J. McKenna, B. McEvoy, D. Sowle, J. Knapp, B. Kane, J. Fabiano, B. Quinlan, C. English and Father Karl, Athletic Director.



At the games and every place students delight in the pause that refreshes.

*LaSalle Coca-Cola Bottling Company  
Mt. Pleasant, Michigan*

## Academy Cagers



**Varsity** - Row 1 (l to r): Russell Hesck, Larry Lapham, Ed Ososki; Athletic Director, Father Karl; Coach Jim Schultz; Jerry Grisdale, John Ottney and Joe Fabiano. Row 2: Bill Quinlan, Tom Cashen, Bob Kane, Bob McEvoy, Conrad English, and Dave Sowle.



**Junior Varsity** - Row 1 (l to r): Coach Jim Schultz; Jim Graham, Jack Breidenstein, John Gabrysiak, Bud Percha, Pat Gaudard, and Father Karl. Row 2: Manager Denny Donoghue; Gerald Farnan, Paul Deni, Dean Carey, Gene Carey, and Pat Corcoran.



## Cheerleaders



Front row (l to r): Verna Mattonen, Joan Corcoran, (captain); Mary Ann Grisdale, Kay Martin. Top row: Kay Kane, Kay Breidenstein, Sue Harrigan.

S H A

### SCORES

32	Remus	51
65	Bay City St. Mary	37
38	Saginaw St. Mary	53
60	Pinconning St. Michael	37
49	West Branch St. Joseph	38
59	Essexville St. John	43
65	Bay City Visitation	54
43	Bay City St. Mary	37
42	Remus	62
65	Pinconning St. Michael	29

(Six more games are scheduled.)

Quinlan connects for two points while Sowle waits for the rebound.



Come on, Bob, jump: it's anybody's ball and it may mean two points.

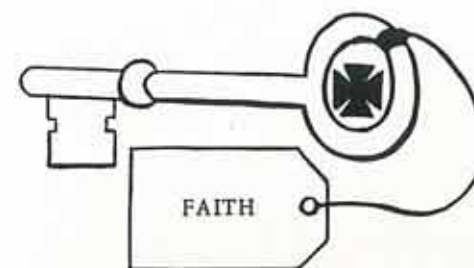
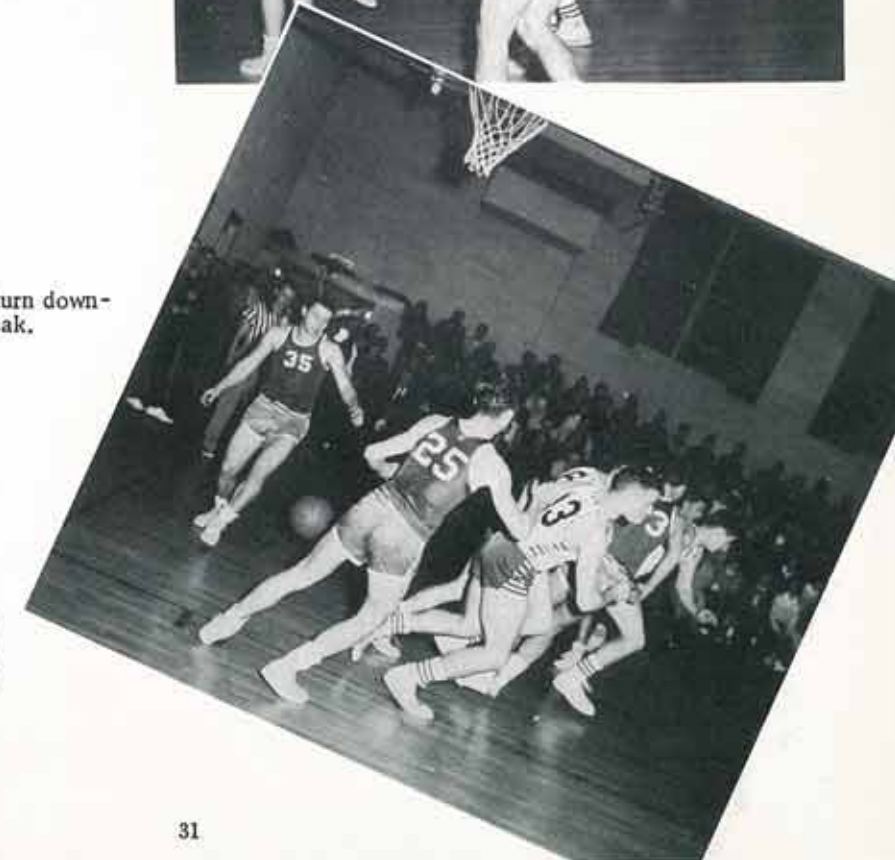


Center jump with Bill Quinlan jumping for Dave Sowle because of a tie-up.



Nice rebound, English, now put it in the basket.

Joe Fabiano and Jim McKenna return down-floor ever-expectant of a fast break.



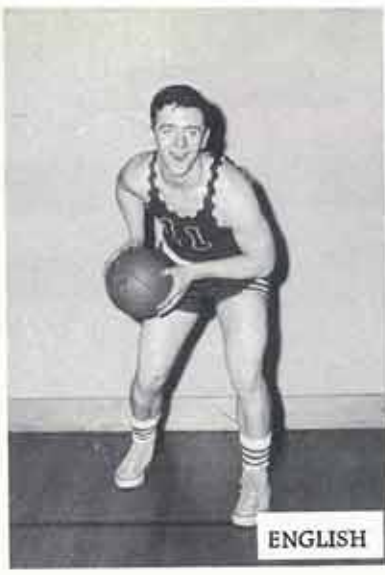




FABIANO



MCKENNA



ENGLISH



OTTNEY



KANE



CASHEN



HESCH



These six seniors, Ososki, Fabiano, Quinlan, Sowle, English, and McKenna, after playing for six consecutive years together, have found that faith in each other and teamwork have been a major factor in their many winning seasons.

Ace Irish center Dave Sowle jumps high in a successful attempt at starting the Irish off to another victory.



Conrad English grabs another rebound from the defender's reach. His strength and desire to win compensate for his lack of those extra inches of height.

From these seven boys will come the backbone of the team for next year. With a little more height and ability, they should be able to fill the shoes of the regular varsity players.



QUINLAN



OSOSKI



SOWLE



McEVOY



GRISDALE



LAPHAM



## Baseball



JOE FABIANO  
Right Field



EDDIE OSOSKI  
Center Field



DAVE SOWLE  
Short Stop



BILL QUINLAN  
Catcher

Joe Fabiano, Bob Kane, Eddie Ososki, Bill Quinlan, Bud Percha, Dave Sowle, Larry Wezensky, and Jack Sowle; missing from the picture are Jim McKenna, Larry Wentworth, and Joe Breidenstein.



## Academic



*Faith in Ourselves*





Jacqueline Ball



Mary Jo Beckett



Jean Beutler

## Freshmen



Dean Carey



Gene Carey



Dorothy Connors



Charles Campbell



John Dart



Alice Doerr



Paul Deni



David Fox



Jeanne Fox



Pat Gaudard



Mary Jane Glade



Mary Jo Hackett



Phyllis Hibberd



Judy Hively



Yvonne Hoag



Helen King



Kathlyn Kisby



Marie Martin



Maxine Maxim



Dorothy McDonald



Bill McCann



Eleanore Lopez



Charles McDonald



Fred McQuaid



Phyllis Percha



Jean Percha



Barbara Persinger



Bill Reed



Nancy Rinehart



Irene Pety



Mike Schmalbach



Betty Smith



Phyllis Smith



Sue Sowle



Therese Sweeney



Beverly Taylor



Barbara Theisen



Patricia Whitney



Mary Welniak





James Beltnick



Jack Breidenstein



Kay Breidenstein



Martha Breuer



Phyllis Brock



Tom Cashen



Virginia Collin



Mary Ellen Cotter



Terry Coughlin



Willard Doerr



Geraldine Epple



Dennis Donoghue



Jo Ann English



Gerald Farnan



Ruth Ann Fox



John Gabrysiak



Gerald Grisdale



Jim Graham

## Sophomores

*Growing in Love of Mary*



Roger Gutka



Jeanne Hackett



Sue Harrigan



Kay Kane



Marjorie McDonald



Ruth Ann McGuirk



John Ortney



Rose Marie Nyer



Edward Percha



Claire Pety



Tom Rinehart



Judy Slattery



Jack Sowle



Nancy Theisen



John Theisen



Richard Theisen



James Wilmot



Marjorie Wezensky



Diane White



Mary Jo Wisneski

*During Her Consecrated Yes*







PATSY COLLIN  
Whimsical ways



SHEILA ARNOLD  
Lively personality

## Juniors



BEVERLY KNAPP  
Red hair, and Irish  
wit to match



LARRY LAPHAM  
Friendly, depend-  
able; always  
courteous



KAY MARTIN  
Enthusiastic lover  
of sports



RUSSELL HESCH  
A philosopher  
merry and wise



GLEN DONOGHUE  
High-spirited

*Faith in ourselves through confidence*



*in Mary and her promises.*



BOB McEVOY  
Direct and out-  
spoken



KATHRYN  
McKENNA  
Quiet and con-  
genial



MARY ANN  
GRISDALE  
Sparkling person-  
ality



PAT CORCORAN  
Subtle humor



KATHRYN GROSS  
Quiet and gentle



CAROL MOORE  
Self assured,  
smooth manners



TOM O'TOOLE  
A light heart and  
a hint of daring



KATHLEEN  
MURPHY  
Pleasant and  
smiling



KATHLEEN HOAG  
Sunny-natured



BOB KANE  
Athletic; dynamic  
personality



SALLY JOHNSON  
A musical genius



LARRY  
WEZENSKY  
True to his word



KAY THEISEN  
Enthusiastic and  
gay; a pleasant  
companion



ED PAPPAS  
Calm and  
thoughtful





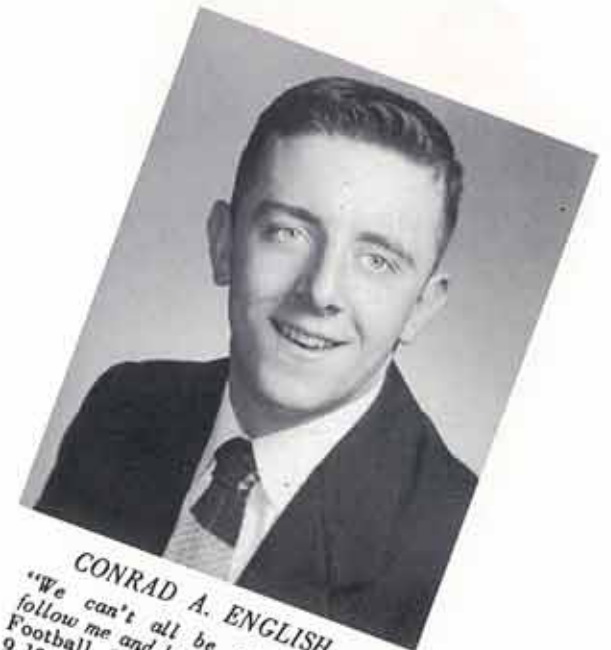
**JOSEPH W. BREIDENSTEIN**  
*"All great men are dying, and I feel sick myself."*  
 Football 9,10,11,12; Basketball 9,10; Baseball 9,10; Glee Club 9,10,11,12; Student Council 11; Latin Legion 10; Sodality 9,10; Cor Jesu Staff 12; Speech Club 12.



**FREDERICK D. CASHEN**  
*"My interest is in the future, because I'm going to spend the rest of my life there."*  
 Football 9,10,11,12; Basketball 9,10,11; Track 9,10; Sodality 9,10,11,12; Glee Club 9; Speech Club 12.



**THOMAS F. CORCORAN**  
*"When the situation becomes ironic, we find your merry voice a tonic."*  
 Football 10,11,12; Sodality 9,10,11,12; Sodality Chairman 12; Glee Club 9; Student Council 9; Class Officer 10,11; Academy Blarney 12; Cor Jesu Staff 12; Latin Legion 10.



**CONRAD A. ENGLISH**  
*"We can't all be perfect, but follow me and learn."*  
 Football 9,10,11,12; Basketball 9,10,11,12; Baseball 12; Student Council 9,11; Class Officer 12; Glee Club 9,10,11,12; Sodality 9,10; Chairman 9.

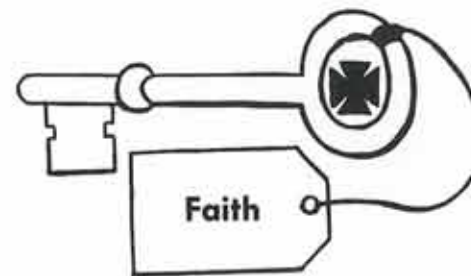


**JEAN E. CORCORAN**  
*"Mischievous lies in the blue of her eyes."*  
 Sodality 9,10,11,12; Glee Club 9,10; Fatima Club 10; Queen's Attendant 9; Square Dance Club 9; J-Hop Committee; Cor Jesu Staff 12; Speech Club 12.

## Seniors



**JOAN M. CORCORAN**  
*"A truer companion one could never find, With goodness, gaiety and laughter combined."*  
 Cheerleader (captain) 12; Glee Club 9,10,11,12; Speech Club 12; Sodality 9,10,11,12; Academy Blarney 12; Cor Jesu Staff 12; T B Script Contest 12; Fatima Club 10.



**JAMES H. GEPFORD**  
*"Always in mischief, always in dutch, Appreciated by teachers, ever so much."*  
 Sodality 9,10,11,12; Fatima Club 10; Speech Club 12.



**JOSEPH G. FABIANO**  
*"He knows that football isn't the only place a good line is needed."*  
 Glee Club 9,10; Class Officer 12; Latin Legion 10; Academy Blarney 12; Cor Jesu Staff 12; Track 9,10; Football 9,10,11,12; Basketball 9,10,11,12; Baseball 9,10,11,12; Speech Club 12.





**JAMES H. KNAPP**  
*"Work fascinates me, I could sit and look at it for hours."*  
 Sodality 9,10,11,12; Football 9,11,12; Glee Club 12; Speech Club 12.



**PATRICIA ANN HORGAN**  
*"Mirthful maid with personality plus, A lady-like model she fashions for us."*  
 Sodality 9,10,11,12; Glee Club 9,10; Class Officer 9,10,12; Cor Jesu Staff 12; Speech Club 12; Latin Legion 10; T B Script Contest 12; Square Dance Club 9; Fatima Club 10; Academy Blarney co-editor 12; J-Hop Committee.



**ANN E. McCONNELL**  
*"Laughing, talking, full of fun, Especially when her shorthand's done."*  
 Sodality 9,10,11,12; Missionary Committee Chairman 10; Publicity Committee 11; Library Club 9,10; Speech Club 12.



**MARION E. McGUIRE**  
*"An Irish lassie, petite and sweet, A charming girl from head to feet."*  
 Glee Club 9,10,11,12; Sodality 9,10,11,12; Queen's Attendant 10; Michigan State Music Scholarship 10; Fatima Club 10; Academy Blarney 12; Cor Jesu Staff 12; TB Script Contest 12; Speech Club 12.

*I believe in one God . . . . .*

**MARY JO McCANN**  
*"Have a good time while you're alive, for you'll be dead a long time."*  
 Sodality 9,10,11,12; Glee Club 9,10; Square Dance Club 9; Fatima Club 10; Speech Club 12; Cor Jesu Staff 12.



*. . . . . The Father Almighty*

**DONNA J. MITCHELL**  
*"No one's foe, each one's friend, For your heart she'll ever contend."*  
 Sodality 9,10,11,12; Speech Club 12; Fatima Club 10.



**JAMES J. McKENNA**  
*"I feel relieved at last, for my working days are past."*  
 Football 9,10,11,12; Basketball 9,10,11,12; Track 9,10; Sodality 9,10,11,12; Glee Club 9,10,11,12.



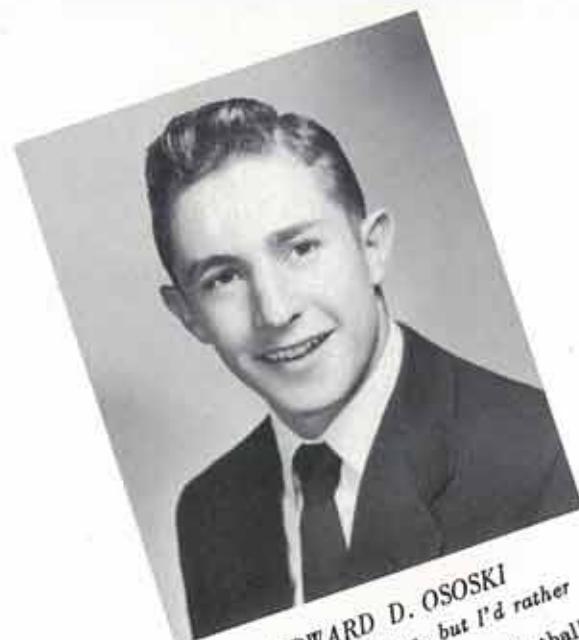
**VERNA H. MATTONEN**  
*"She is as little as they come, But big in heart and so much fun."*  
 Transferred from St. Francis, Traverse City 10. Glee Club 9,10,12; Sodality 9,10,11,12; Cheerleader 12; Class Officer 11; Cor Jesu Staff 12; Student Council Officer 12; Latin Legion Officer 10; Speech Club 12; Academy Blarney 12.





**MARY JOHANNAH MURPHY**

"An Irish miss of the nicest kind, Dancing eyes and intelligent mind." 9, 10, 11, 12; Secretary Sodality 9, 10, 11, 12; S.S.C.A. 10; 11, Co-prefect 12; Class Officer Glee Club 9, 10, 12; Girls' State 11; Democracy Contest 11; Latin Legion President 10; Girls' T B Script Contest 12; Cor Jesu Co-editor; Homecoming Queen 12; Speech Club 12; J-Hop Committee.



**EDWARD D. OSOSKI**

"I can be serious, but I'd rather be gay." 9, 10, 11, 12; Basketball 9, 10, 11, 12; Baseball 9, 10, 11, 12; Sodality 9, 10, 11, 12; Student Council Officer 12; Glee Club 9, 10; Cor Jesu Staff 12.



**JUNE RADEY**

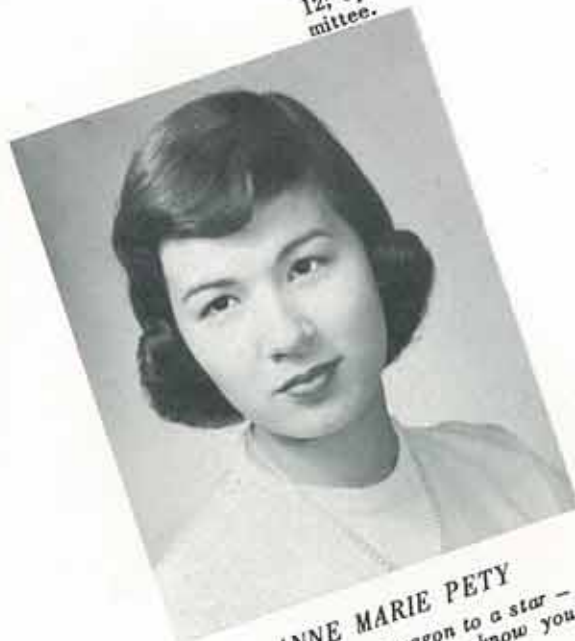
"Give her a camera and she will click anywhere." Sodality 9, 10, 11, 12; Secretary 9, 10, 11, 12; Glee Club 11; Co-Chairman 12, Club 10; Square Dance Club 10; Cor Jesu Staff; Fatima Club 12; S.S.C.A. 11; Speech



**WILLIAM JAY QUINLAN**

"Fleet of foot, strong of limb, Athletic deeds are well done by him." 9, 10, 11, 12; Basketball 9, 10, 11, 12; Baseball 9, 10, 11, 12; Track 9; Sodality 9, 10, 11, 12; Co-Prefect 12; Glee Club 9, 10, 11, 12; Speech Club 12; Cor Jesu Sports Editor; Student Council 10, 11, 12.

*Maker of heaven and earth . . .*



**ANNE MARIE PETY**

"Hitch your wagon to a star - A dreamer, yes, we know you are." Square Dance Club 9; Fatima Club 10; Latin Legion 10; Glee Club 9, 10, 11; Sodality 9, 10, 11, 12; Class President 12; Queen's Attendant 12; Cor Jesu Co-editor 12; Student Council 12; Speech Club 12.



**PATRICK J. PAPPAS**

"Handsome he is, and tries as he can, To always be a gentleman." Sodality 9, 10, 11, 12; Speech Club 12; Fatima Club 10.

*. . . . . and of all things visible and invisible*



**DAVID H. SOWLE**

"Hard telling what these quiet boys will do when no one is looking." 9, 10, 11, 12; Basketball 9, 10, 11, 12; Baseball 11, 12; Track 9; Sodality 9, 10, 11, 12; Glee Club 9, 10; Student Council 10; President 12; Cor Jesu Staff; Speech Club 12.



**RUTH ANNE SOWLE**

"You never know what's in my mind; It's there for me to know and you to find." Sodality 9, 10, 11, 12; Glee Club 9, 10, 11, 12; Cor Jesu Editor; Music Graduate 12; S.S.C.A. 11; Speech Club 11, 12; Student Council 12; Class Officer 10; Academy Blarney 12; Democracy Contest 12; T B Script Contest 11, 12; Square Dance Club; Latin Legion 10.





**DIANNA D. THEISEN**  
*"A little nonsense now and then  
 is relished by the best of men."*  
 Sodality 9,10,11,12; Glee Club  
 9,11; Queen's Attendant 11; Cor  
 Jesu Staff 12; Fatima Club 10;  
 Square Dance Club 9; Speech  
 Club 12; Academy Blarney 12.



**JOHN L. WELNIAK**  
*"Silence is golden - so fare you  
 well. Though quiet you are, we  
 think you're swell."*  
 Sodality 9,10,11,12; Cor Jesu  
 Staff 12; Speech Club 12; Class  
 Officer 11; Eucharistic Commit-  
 tee 12; Boys' State 11.

*And in one Lord Jesus Christ.*



**MARY ANN WEJROWSKI**  
*"Small of stature, sweet of smile,  
 Bright and cheery all the while!"*  
 Glee Club 9,10; Sodality 9,10,  
 11,12; Officer 10; Cor Jesu Staff  
 12; Fatima Club 10; Square  
 Dance Club 9; Speech Club 12.



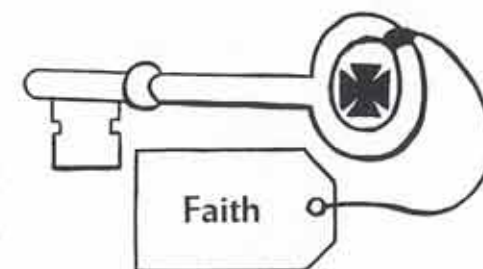
**LAWRENCE S. WENTWORTH**

*"Twelve long years of school  
 have passed, And I'm out to see  
 the world at last."*  
 Sodality 9,10,11,12; Cor Jesu  
 Staff 12; Basketball 10; Foot-  
 ball 11; Baseball 12; Speech  
 Club 12.



## Valedictorian

An active faith and gay  
 spirits helped Mary Jo  
 Murphy to sail smoothly  
 through four years of high  
 school to graduation and  
 the top scholastic honor,  
 class valedictorian with a  
 2.8 average. Besides ac-  
 cumulating a remarkably  
 high academic score,  
 Mary Jo served as Sodality  
 co-prefect, associate-  
 editor of Cor Jesu, and an  
 honorary member of the  
 student council.



## Honor Students

## Salutatorian

John Welniak, another  
 senior distinguished for  
 vigorous Christian faith,  
 earned a four-year aver-  
 age of 2.4 and the honor of  
 class salutatorian. John  
 was an active member of  
 the Eucharistic Sodality-  
 Committee and Cor Jesu's  
 advertising manager. His  
 closest competitor for  
 scholastic honors was  
 Eucharistic Committee  
 chairman, Thomas  
 Corcoran, who heaped up  
 a 2.3 average.



## Class Officers

Anne Pety  
 President  
 Joseph Breidenstein  
 Vice-President  
 Pat Horgan  
 Secretary  
 Conrad English  
 Treasurer

## Senior Selections

DIANNA THEISEN	MOST BEAUTIFUL
VERNA MATTONEN	BEST PERSONALITY
CONRAD ENGLISH	MOST POPULAR
JOHN WELNIAK	BEST MANNERED
MARY JO MURPHY	MOST INTELLIGENT
DAVE SOWLE	MOST HANDSOME
BILL QUINLAN	BEST ATHLETE
TOM CORCORAN	MOST LIKELY TO SUCCEED
JOAN CORCORAN	BEST DANCER
MARIAN MCGUIRE	BEST DRESSED



## Seniors' Mothers And Dads

Mr. & Mrs. Joseph Breidenstein	Joe's Mother & Dad
Mr. & Mrs. Leo Cashen	Fred's Mother & Dad
Mr. & Mrs. James Corcoran	Jean & Joan's Mother & Dad
Mr. & Mrs. Fred Corcoran	Tom's Mother & Dad
Mr. & Mrs. Joseph English	Conrad's Mother & Dad
Mr. Herbert Gepford	Jim's Dad
Mr. & Mrs. Frank Horgan	Pat's Mother & Dad
Mr. & Mrs. Harold Knapp	Jim's Mother & Dad
Mr. & Mrs. Theodore Mattonen	Verna's Mother & Dad
Mr. & Mrs. A. A. McCann	Mary Jo's Mother & Dad
Mr. & Mrs. Bernard McConnell	Ann's Mother & Dad
Mr. & Mrs. Joseph McGuire	Marian's Mother & Dad
Mr. & Mrs. Edward McKenna	Jim's Mother & Dad
Mr. & Mrs. Joseph Mitchell	Donna's Mother & Dad
Mr. & Mrs. John T. Murphy	Mary Jo's Mother & Dad
Mr. & Mrs. Tony Ososki	Eddie's Mother & Dad
Mr. & Mrs. Gus Pappas	Pat's Mother & Dad
Mr. & Mrs. Maurice Pety	Anne's Mother & Dad
Mr. & Mrs. John Quinlan	Bill's Mother & Dad
Mr. & Mrs. James Radey	June's Mother & Dad
Mr. & Mrs. Harold Sowle	Dave's Mother & Dad
Mr. & Mrs. Francis Sowle	Ruth Anne's Mother & Dad
Mr. & Mrs. Elmer Theisen	Dianna's Mother & Dad
Mr. & Mrs. Edmund Wejrowski	Mary Ann's Mother & Dad
Mr. & Mrs. John Welniak	John's Mother & Dad
Mr. & Mrs. Sylvester Wentworth	Larry's Mother & Dad

## Cor Jesu Patrons

Reverend Edward N. Alt	Mr. and Mrs. A. R. Lapham
Reverend W. F. Jude	Bill Martin, '52
Reverend F. J. Karl	Ann McCormick, '53
Pete Breidenstein, '53	Betty McDonald, '52
Mr. and Mrs. C. W. Collin	Mr. and Mrs. J. L. McDonald
Mary Corcoran, '52	Michael McKenna, '53
Mr. and Mrs. G. J. Cotter	Mr. and Mrs. J. Neyer
Mr. and Mrs. J. L. Dibble	Mr. and Mrs. J. Ottney
Jack Dibble, '51	Marilyn Quillen, '53
The Freshman Class	The Senior Class
Mr. and Mrs. Joseph Fabiano	Jim Sheppard, '50
Mr. and Mrs. S. W. Fox	Mr. and Mrs. J. L. Slattery
Mr. and Mrs. M. Gaudard	The Sophomore Class
Mr. and Mrs. M. J. Grisdale	Phyllis Theisen, '53
Dr. and Mrs. Wm. Harrigan	Rosilyn Theisen, '53
Mr. and Mrs. E. G. Hartman	Paul Voisen, '53
The Junior Class	Mr. and Mrs. Robert Wood

## SEPTEMBER



Interested students watch as old Sacred Heart takes on a new appearance.

## Revue

## OCTOBER



Underclassmen give their serious attention to a Retreat conference.

## NOVEMBER



The queen and her court cheer on the team to a Homecoming victory.

## DECEMBER



Marian Year activities highlighted the history of the 1954 senior year.

## JANUARY



Directors and committee heads of a top-flight social event, S. H. A. Athletic Ball, look on.

## FEBRUARY



Among the first arrivals at the "Heart of My Heart" valentine ball were Sue Harrigan and John Ottney.

## APRIL



Making preparations for the Senior Prom is a pleasant task for class officers.

## JUNE



## MAY



Co-prefect Mary Jo Murphy rehearses for her big moment, the crowning of Mary.





### *Glee Club*

Row 1 (l. to r.): P. Collin, M. Wezensky, K. Martin, P. Brock, M. Murphy, M. McGuire, M. McDonald, V. Collin, J. Hackett, R. Sowle, D. White, N. Theisen. Row 2: J. Percha, V. Mattonen, S. Johnson, B. Fisher, D. Theisen, R. Gutka, J. Wilmot, J. Ortney, J. English, M. Wisneski, J. Corcoran. Row 3: M. Grisdale, J. Slattery, K. Theisen, K. Breidenstein, P. Corcoran, B. Quinlan, J. Theisen, W. Doerr, R. Fox, S. Harrigan, K. Kane. Row 4: R. Neyer, S. Arnold, M. Bruer, C. English, J. McKenna, B. McEvoy, J. Sowle, J. Breidenstein, M. Corter, C. Pety, K. McKenna.



### *Music Graduate*

A fitting finale to eight years of musical studies was achieved when Miss Ruth Anne Sowle, talented pianist, was graduated from Sacred Heart Academy's school of music.

During her course of piano instruction, Ruth Anne completed six years of study under Sister M. Kevin and two final years under Sister Henry Suso.

A lover of classical music, Ruth Anne's favorite composers include Chopin, Rachmaninoff, and Beethoven.

*"Music is a beautiful and glorious gift of God, the reflection of the heavenly harmonies in which His angels and all the celestial host ever praise and glorify their Creator, singing in sweet strains: Holy, holy, holy, Lord God of Sabaoth."*

— M. Praetorius



### *Flutophone Band*

Row 1 (l. to r.): Mary Ellen Farnan, Sue Downing, Theresa Wejrowski. Row 2: Joan Thering, William Prior, Karen Voisin, Mary Louise Rea, Rudelle Williams, William Maxim, Rochelle Heintz, Molly Gallagher. Row 3: Tom Durfee, Mary Ann Webster, LaDawn Netzel, James Horvath, Patricia Tilman, Betty Gault, Joan Keenan, Rita Huber, Ann Johnson.







Academy's "I Speak for Democracy" contestants, Pat Corcoran, Ruth Sowle, Tom Corcoran (chairman), Bill Fisher, and Judy Slattery breathlessly await the judges' decision.



Bill Fisher, Academy sophomore, captured first place in the Democracy contest with his outstanding oration.

Successful in his initial contest, Bill is looking forward to two more years in varsity speech at Sacred Heart.

## Classes

Speech class, a recent addition to Sacred Heart's curriculum, has become a popular subject with Academy students.

The TB Script contest and the Democracy contest are the major projects of the speech class. Also included in this year's activities was a symposium on the Marian year; the speeches were given by speech class members on the feast of Our Lady of Lourdes at a high school assembly.

Speech class members, Pat Horgan, Marian McGuire, and Joan Corcoran listen to fellow-member Mary Jo Murphy, all-state winner, as she speaks on "It's Your Sanitorium" in the local TB Script contest.

Delivering her prize-winning speech, Pat Horgan talks on "Sing a Song of Health", her entry in the state-wide TB Script contest.



Junior lads and lassies pause briefly between classes.

Junior Bob Kane proves his knowledge of geography to Economic World students.



First-year typists are a picture of serious concentration as they tap out daily drills.



Sophomores in home-making class discuss the knitting of brightly colored wool scarfs.



Bill Fisher proves the hypothesis of a geometry theorem to fellow classmates.



John Gabrysiak and Jim Graham propose a toast to Vergil as sophomore Latin students enjoy a birthday party in the honor of the great poet.



## Classes



First-year Latin students hear Nancy Rinehart do a little translating.



A group of freshmen prepare for religion class.



Freshman class officers Kathlyn Kisby, Mike Schmalbach, Sue Sowle, and Pat Gaudard discuss plans for Homecoming events.





## Cor Jesu

Members of the business committee, Verna Mattonen, Jean Corcoran and Ed Ososki, business manager (right) give a sales talk to Fred Cashen, the first senior to sign up his parents as honorary Cor Jesu patrons.

Sports writers Joe Fabiano, Tom Corcoran, Bill Quinlan (sports editor), and Larry Wentworth take time out during a busy football season to catch up on yearbook assignments.



Just before the first deadline the photographer caught co-editors Anne Pety and Mary Jo Murphy in a serious mood.

## Staff

### Journalism

Academy journalists have as their theme, "American journalism must reflect faith." America stands for faith in God, in ourselves, in the family, and in our country.

This principle is the working basis of Sacred Heart's publication, the Cor Jesu yearbook, and of its contributions to the local newspaper column, The Academy Blarney, edited by Joe Fabiano, Pat Horgan, and Ruth Anne Sowle.



Joan Corcoran, Pat Horgan, and Marion McGuire, layout stylists work closely with the staff editors.



The advertising committee June Radey, Joe Breidenstein, Conrad English, Dave Sowle, John Welniak (manager), and Mary Ann Wejrowski look happy after a successful sales campaign.

Ruth Ann Sowle, editor-in-chief, takes her job seriously and sweetly.

... Faith in God



There's never an idle moment for staff typists Mary Jo McCann and Dianna Theisen.



## Patron Advertisers

ARCHEY BROTHERS  
HUDSON SALES & SERVICE  
1016 S. Mission

Compliments of the  
BENNETT BAR  
Mt. Pleasant

"BILL" MURRAY'S TIRE SERVICE  
120 S. Fancher  
Mt. Pleasant

CITY BARBER SHOP  
206 S. Main  
Phone 28-601

CITY BEAUTY SHOP  
206 S. Main  
Hair Cutting & Styling

COLLIN FARMERS SUPPLY  
Fertilizer-Feeds-Seeds-Lime  
Mt. Pleasant

Congratulations, Seniors  
CRYSTAL ICE CO.  
Corner of Pickard & Kinney

D & C STORE  
Corner of Broadway & Main  
Mt. Pleasant

DONDERO'S  
Beer, Wine, & Liquor  
130 S. Main

Good Luck, Seniors  
FORTINO FOOD MARKET  
416 N. Mission

GEORGE DAY ELECTRIC  
MOTOR SALES & SERVICE  
Phone 20-961

HARPER'S FLOWERS  
305 S. Main  
Mt. Pleasant

HOTEL CHIEFTAIN  
Delicious Food-Pleasant Rooms  
Mt. Pleasant

JACKSON'S GROCERY  
5114 E. Pickard  
Mt. Pleasant

Congratulations, Seniors  
JOHNSON OIL CO.  
Mt. Pleasant

Congratulations, Seniors  
KRUNCHY KRISP POTATO CHIP CO.  
Mt. Pleasant

LU-MAR BEAUTY SHOP  
903 E. Illinois  
Phone 28-591

Compliments of  
LYNCH GROCERY  
225 S. Main

MARSHALL'S TEXACO SERVICE  
1001 S. Mission  
Mt. Pleasant

MC FARLANE DAIRY  
Pasteurized Dairy Products  
D. W. McFarlane

MCKENNA REFRIGERATION  
Frigidaire Sales & Service  
Mt. Pleasant

MARVAL LALONE  
Detroit Creamery Milk Hauler  
Rosebush, Michigan

NORTHWOOD DAIRY  
Ice Cream  
Phone 35-041

NU-WAY CLEANERS  
105 Court St.  
Phone 36-091

PETERS RADIO & TELEVISION  
107 N. Main  
Emerson-Capehart

Compliments of  
PLEASANT CAB  
Phone 26-061

PHILLIPS CAFE  
406 S. Mission  
Mt. Pleasant

Compliments of  
POLLY'S MARKET  
166 N. Mission

PRIOR'S SERVICE STATION  
122 S. Washington  
Mt. Pleasant

REIN'S MOTEL  
816 S. Mission  
Mt. Pleasant

SHEPHARD'S  
Gifts--Jewelry  
125 E. Broadway

Compliments of  
SIDNEY SOWLE & SON  
Moving & Storage

SPORT & TOY SHOP  
Toys & Athletic Supplies  
115 E. Broadway

UNION TELEPHONE COMPANY  
The Value of the Telephone  
is greater than the cost.

UTTERBACK SERVICE STATION  
24-hour Service  
Mission & Broadway

VIC'S SUPER MARKET  
Wholesale & Retail  
316 North Mission

## Patron Advertisers

ADAMS FLOWER SHOP  
Flowers for all Occasions  
215 South Mission

BELL'S HAT SHOP  
Gloves-Hats-Hose-Purses  
205 E. Broadway

Compliments of  
LEO CASHEN  
Construction Work

CENTRAL TELEVISION SERVICE  
North on U. S. 27  
Mt. Pleasant, Michigan

CLABUESCH WALGREEN DRUG STORE  
Fountain Service  
110 E. Broadway

C. W. COLLIN  
Evaluation Sales and Service  
Mt. Pleasant, Michigan

CORCORAN'S GROCERY  
1021 Gratiot Street  
Mt. Pleasant, Michigan

DITTMAN'S SHOE STORE  
133 East Broadway  
Mt. Pleasant, Michigan

ELMORE'S  
Furniture-Paint-Wallpaper  
512 S. Mission

ERVIN ELECTRIC  
Appliances-Radio-Television  
112 N. Court Street

Compliments of  
HAL'S TOTS 'N TEENS  
Everything for Children

Compliments of  
HOOD LUMBER CO.  
111 West Pickard

KANE'S  
Hardware-Furniture  
121 E. Broadway

Compliments of  
KENNEY'S WHOLESALE GROCERY  
Mt. Pleasant, Michigan

Compliments of  
LEONARD PIPE LINE CO.  
119 E. Broadway

LOG CABIN RECORD SHOP  
Records-Albums-Needles  
Mt. Pleasant, Michigan

Compliments of  
MICHIGAN-OHIO PIPELINE CORP.  
110 E. Broadway

MILO JONES SUPERETTE STORE  
Groceries-Meats-Beer  
1018 W. Broadway

Compliments of  
MOELLER'S MARKET  
104 E. May Street

Good Wishes  
MT. PLEASANT DRUG CO.  
Charles E. Smith-Leo F. Brandell

MT. PLEASANT HARDWARE &  
FURNITURE CO.  
102-104 South Main Street  
Mt. Pleasant, Michigan

MT. PLEASANT LUMBER CO.  
"One Piece or a Carload"  
Phone 32-301

NAGY'S REFINERY SERVICE  
1001 W. Broadway  
Mt. Pleasant, Michigan

PALMER DRUG STORE  
Drugs-Cosmetics  
110 S. Main

PERSONALITY HOME FURNISHING CO.  
Furniture  
South US 27

RUSH FUNERAL HOME  
Ambulance Service  
Fancher at Broadway

SCOTTY RESTAURANT  
Home Cooked Food-24-Hr. Service  
700 N. Mission

Compliments of  
STINSON FUNERAL HOME  
South College

SWEENEY SEED CO.  
Lawn-Garden-Field Supplies  
110 S. Washington Street

TRAINOR'S GENERAL STORE  
Clothing-Groceries-Television  
Phone 6, Rosebush, Michigan

### Professional

Congratulations, Seniors  
DAVIS MEDICAL CLINIC  
Brown Street

DR. R. E. HALL  
805 Douglas Street  
Mt. Pleasant, Michigan

DR. FRED SCHALL  
Optometrist  
119 S. College

JOSEPH SWEENEY, D. D. S.  
123 S. College  
Mt. Pleasant, Michigan





## Student Council

Junior representatives Pat Corcoran (honorary), Shiela Arnold, Mary Kay Murphy, Kay Theisen, and Russ Hesch discuss plans for a safer-driving campaign among Academy high school students.



Council representatives of the senior class Bill Quinlan (honorary), Verna Mattonen, Anne Pety (honorary), Eddie Ososki, Dave Sowle, Mary Jo Murphy (honorary), and Ruth Ann Sowle get together for a pre-council meeting. Honorary members belong to this group because of their office of Sodality prefect or class president.

Underclassmen Jerry Farnan, Gene Carey, Judy Slattery, Kathlyn Kisby (honorary), Mary Jo Hackett, and Sue Harrigan (honorary) are initiated into student council group discussions.



... Faith in Our Government

Patronize the Cor Jesu Advertisers

Compliments of

# NAUMES

Motor Sales

for the new '54 Pontiac

... and the '54 Cadillac







**COLE'S CAMPUS STORE**

1099 S. College

**BILL SALLER HI-SPEED**

801 N. Mission

Pleasant Cab

Phone 27-971



*Compliments of*

**ART SAVAGE**

Oldsmobile  
Rocket Engine Cars

*Compliments of*

**LEO BEARD INC.**

227 S. Main

Mt. Pleasant

Mich.

**HOUSEHOLD  
APPLIANCE, INC.**

For RCA VICTOR

Radio - Television - Records

*Stores That Confidence Built*

Clare - Midland

Mt. Pleasant

**CLASS FOR '54 !!!**



**CONGRATULATIONS**

to the

**CLASS OF '54**

*from*

**ALBAR**

***Nash***



It Pays All-Ways - To Shop At . . .

**THE GLEN OREN STORES**

"Built on Values"

*Your Favorite . . . Department Stores*

*Compliments of*

**ASSMANN**

**Glass Company**

3798 S. Mission  
Phone 25-691  
Mt. Pleasant, Michigan

*Compliments of*

**THE WARD**

**AND**

**BROADWAY THEATERS**

Always the latest and best in  
Screen Entertainment

Dodge Job-Rated Trucks  
Dodge Passenger Cars  
Plymouth Passenger Cars

**HIBBERD MOTOR SALES**

509 N. Mission on U.S. 27  
Mt. Pleasant Michigan  
Telephone 36-821

CONGRATULATIONS

*For A Wonderful Yearbook*

From Where You Get Your Pickwick Papers,  
Zipper Binders and Note Book Paper

**THE PICKWICK CO.**

113 East Michigan Ave.  
Mt. Pleasant Mich.

**Elliott Greenhouses**

*FLOWERS For All Occasions*

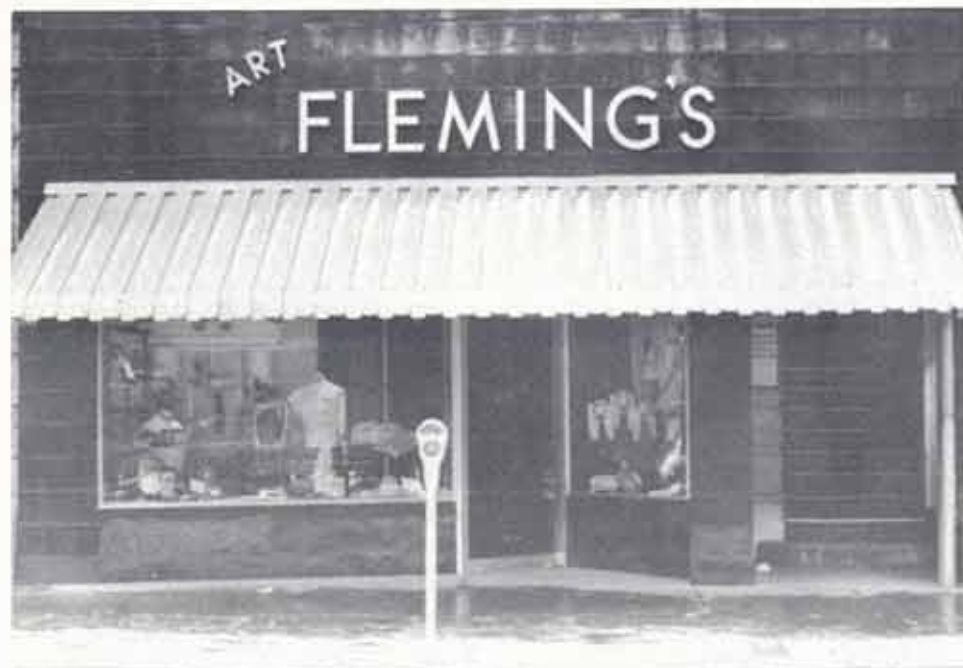
Phone 35-381

300 W. Broadway  
Mt. Pleasant Mich.

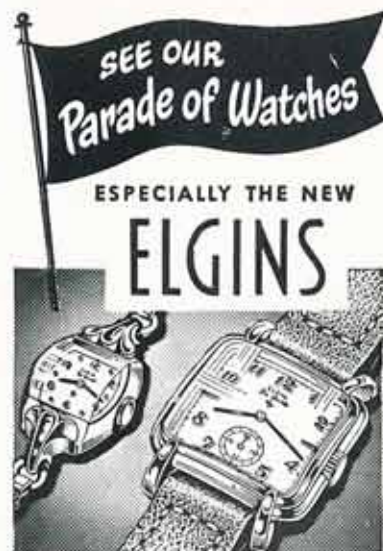


**RICHMOND AND SHANGLE**





## DISTINCTIVE APPAREL FOR MEN



The DuraPower Mainspring\* is in all new Elgins. Eliminates 99% of all repairs due to steel mainspring failures.  
\*Patent pending

**E. A. VOISON & SONS**

112 East Broadway

*Congratulations, Seniors*

**FABIANO BROS.**

*Congratulations, Seniors*

**KIRKEY ELECTRIC COMPANY**

Westinghouse Appliances

221 South Main  
Phone 34-041

*Compliments of*

**JOE THEISEN'S SERVICE**

Drake's Gasoline

"BEST FOR LESS"

U.S. 27  
North of State Police Post

Sealy Mattresses and Sleeper Beds, Berkline Chairs  
Grand Valley Living Room Suites, Bald Knob Bedroom Suites  
Crosley Kitchen Appliances  
Furniture Value Basement

**Carl's FURNITURE**  
205 N. MAIN · PHONE 36-201



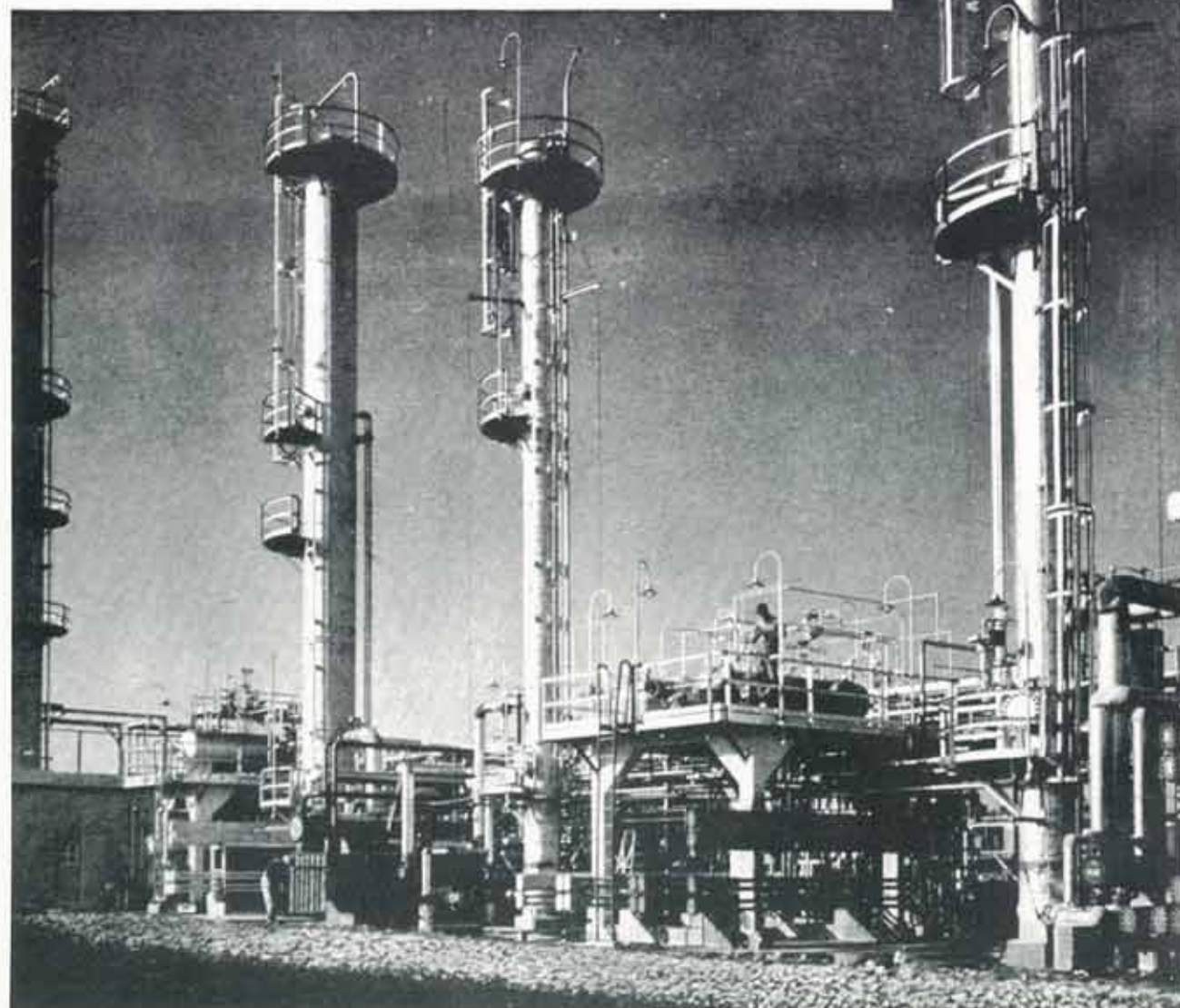
# ROOSEVELT

OIL AND REFINING CORPORATION  
MT. PLEASANT, MICHIGAN



... Refiners of Famous

**POWER FLIGHT**  
**HIGH OCTANE**  
**GASOLINES**



*Patronize the Cor Jesu Advertisers*

*Compliments of*

## JACK'S SNACK BAR

*"Where the Gang Meets"*

208 South Main Street  
Mt. Pleasant Michigan

## JOHNSON SHOE CO.

114 South Main St.

Mt. Pleasant Michigan

**Compliments of**

## PERCHA DECORATORS

**Devoe Paints**

**Residential-Industrial-Commercial**

**Rubber-Asphalt-Tile-Laying**

**Phone 35-531 or 27-933**



## STEWART'S TOWN SHOP



Manhattan Shirts

Hyde Park Suits

White Stag Sport Togs  
Esquire Sox

104 S. Main

Tel. 36-781

### Autographs

Sister Mary Richard  
Sister Mary Conifold  
Sister Mary Grace, O.P.

Father Edward M. Alet  
Father Francis L. Karl

Sister Mary Celine, O.P.  
Sister Mary Henry Suso, O.P.  
Sister Mary Cecile, O.P.  
Sister Frances Raphael, O.P.