



*We dream of victory; we say, "Mary,
Help of Young Christian Citizens, pray for us."*



*Sacred Heart Church,
Cherished by Academy
Students and Alumni.*

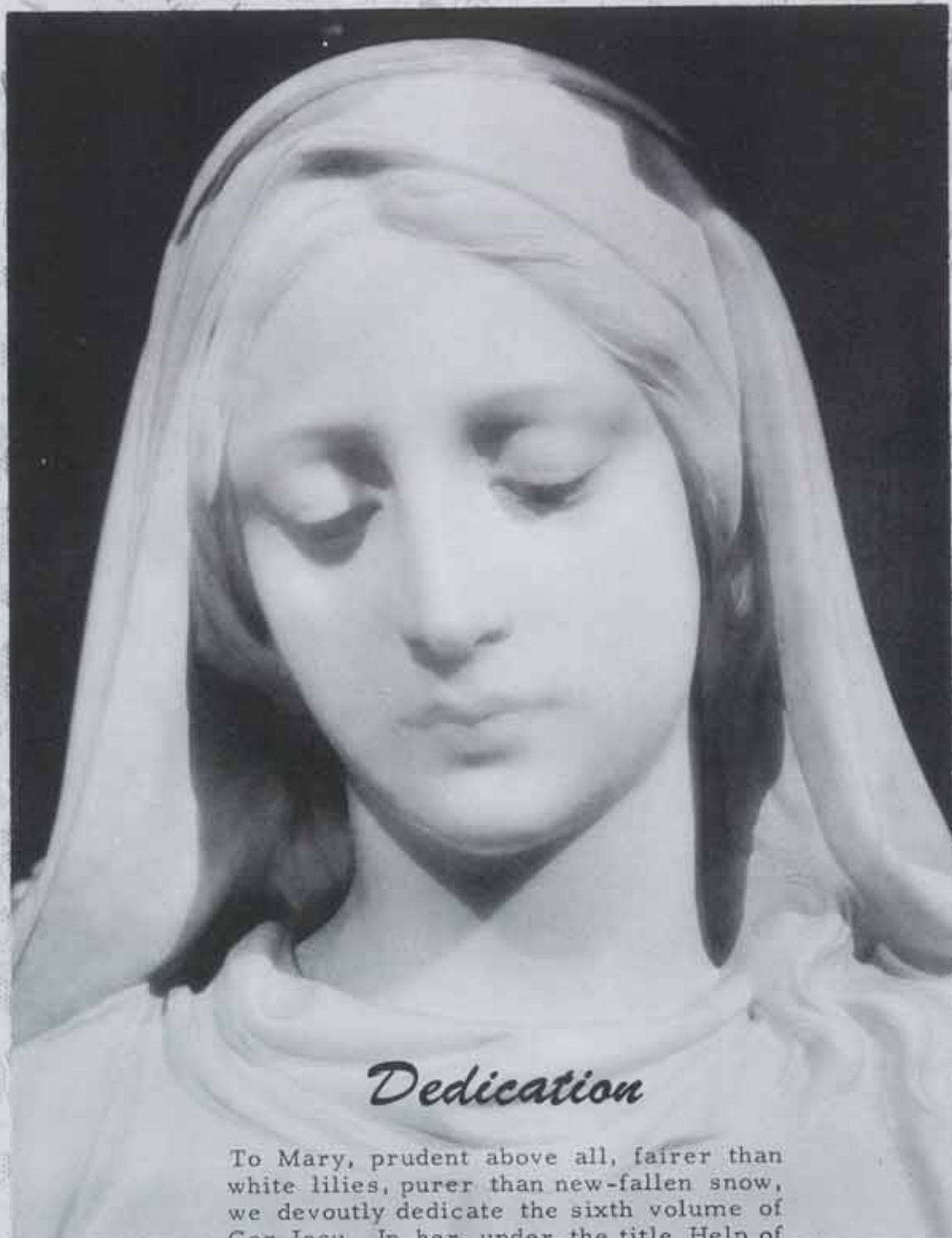
THE SIXTH ANNUAL

Cor Jesu

Published by the
Class of Fifty-three
Sacred Heart Academy,

Mt. Pleasant, Michigan





Dedication

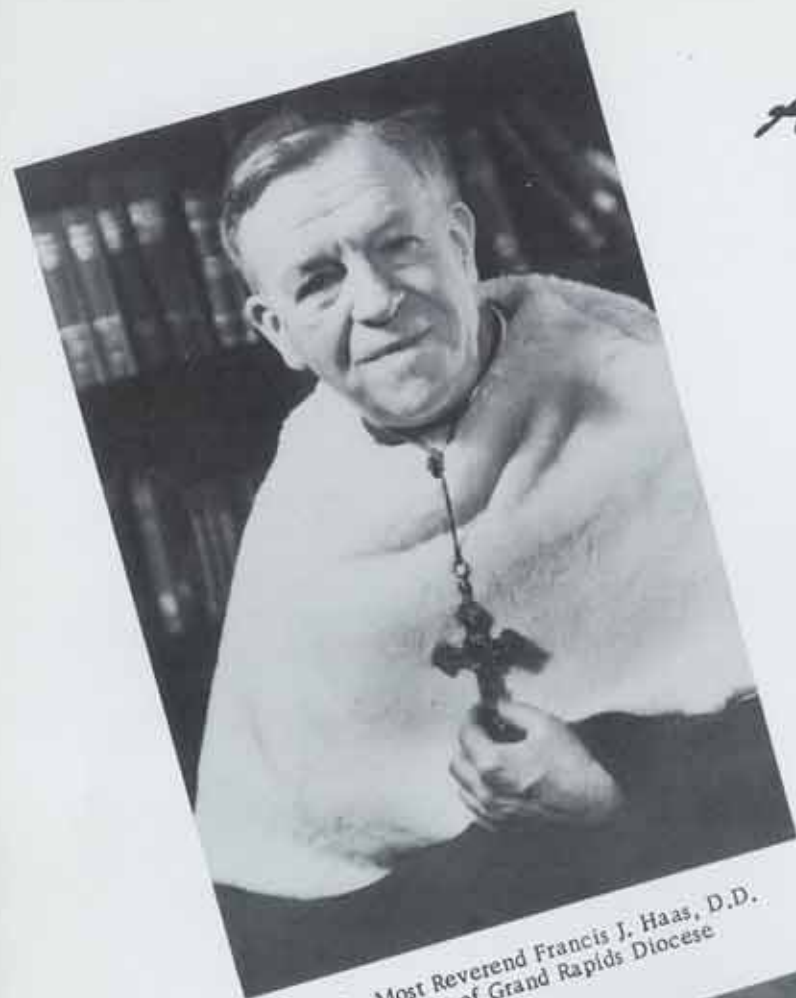
To Mary, prudent above all, fairer than white lilies, purer than new-fallen snow, we devoutly dedicate the sixth volume of Cor Jesu. In her, under the title Help of Christians, we anchor our hopes and prayers for a happy and successful life. O Mary, Help of Young Christian Citizens, pray for us.

The Class of '53

Spiritual



Administration



The Most Reverend Francis J. Haas, D.D.
Bishop of Grand Rapids Diocese



The Very Rev. L. J. Farquharson
Pastor of Sacred Heart Church
Superintendent of Sacred Heart Academy



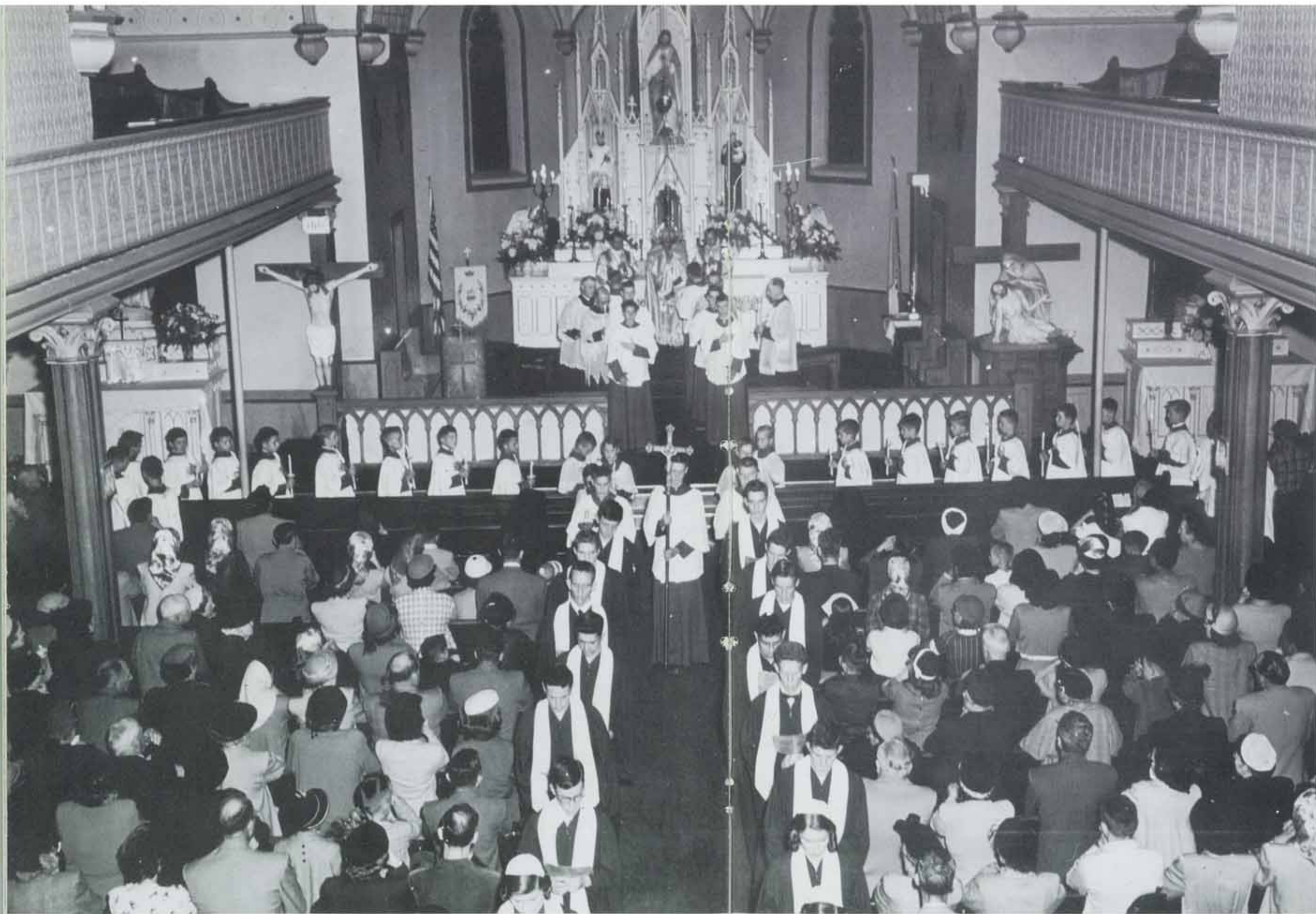
John Murray
Athletic Coach



Reverend Francis Karl
Religion Instructor

Faculty

Rev. L. J. Farquharson	Superintendent
Rev. Francis Karl	Religion, Athletic Director
Sister M. Richard, O. P.	Principal
Sister M. Grace, O. P.	English
Sister Frances Raphael, O. P.	English, Latin
Sister M. Cecile, O. P.	Science
Sister Irene Therese, O. P.	Commerce, Library
Sister Henry Suso, O. P.	Glee Club, Music
Mr. John Murray	Social Studies, Coach



Procession: Forty Hours Devotion

Sodality



Participants in the May Crowning, a featured event of the fifth annual Youth Congress.



Officers

Co-prefects, Jean Lapham, Thomas Rush; secretary, Mary Jo Murphy; treasurer, William Quinlan.

Jean Lapham, Joan Fleming, Father Lord, Mary J. Prior, Kay Kipfmuehler, and Joyce Dibble at the Summer School of Catholic Action, Chicago, August 25-30.



Sodality Committees

Missionary Sophomores Sally Johnson, and Patrick Corcoran discover rare stamp in collection to be sent to far East missions.



Our Lady's Freshmen Gerald Grisdale and Joan English inspect poster of Blessed Virgin to be used as school decor.

Vocation Ann Pety, June Radey, Mary Ann Wejrowski, Dianne Theisen, and Marian McGuire, juniors, make plans for the observance of Vocation week.



Eucharistic Mary Jane Prior, Joan Fleming, Paul Voisin, and Thomas Radey, seniors, prepare the traditional Advent wreath for noonday ceremonies.



..... Reception



Senior Altar Boys

John Kennedy, John Murphy, Thomas Rush, Thomas Sweeney, William Clare, Michael McKenna, Thomas Radey.



Vacation Choir

Kay Theisen, Sally Johnson, Rosilyn Theisen, Donna Wischmeyer, Mary Lou Fisher.

Student Organists

Rosilyn Theisen, Sally Johnson, Kathlyn Kisby.



Susan Harrigan, Jean Hackett, Shirley Landwehr.

Academic





THOMAS SWEENEY
Salutatorian

THOMAS RUSH
Valedictorian



Seniors

Honor Students

Class Officers

President Thomas Sweeney
Vice-president Phyllis Theisen
Secretary Esther Berg
Treasurer James Powell

Senior Selections

<i>Best Personality</i>	Esther Berg	<i>Best Athlete</i>	John Murphy
<i>Best Manners</i>	Russell Hoffmeyer	<i>Best Artist</i>	Rosilyn Theisen
<i>Best Student</i>	Thomas Rush	<i>Most Beautiful Girl</i>	Donna Wischmeyer
<i>Most Popular</i>	William Clare	<i>Most Handsome Boy</i>	Peter Breidenstein
<i>Best Dancer</i>	Michael McKenna	<i>Most Likely To Succeed</i>	Joyce Dibble



ESTHER BERG
"Bergie"
"Stately girl both fair and tall,
A willing hand at beck and call."
Sodality 9,10,11,12; Glee Club
9,10,11; Fatima Club 10; Queen's
Court 10; Cheerleader 11; Class
Officer 12; Cor Jesu Staff 12;
Speech Club 12.

JOAN BELTINGK
"Jo"
"A girl who'll never fret or fuss-
She shows good personality
plus."
Sodality 9,10,11,12; Glee Club
10,11; Fatima Club Officer 10;
Speech Club 12.



PETER BREIDENSTEIN
"Harry"
"May I never find a broken rung
on the ladder of success."
Mt. Pleasant High School 9,10;
Sodality 11; Class Officer 11;
Speech Club 12.

Seniors

"Mary, Help of Christians,
pray for us."



BEVERLY CAMPBELL
"Bev"
"Dancing is the Joy of life."
Sodality 9,10,11,12; Fatima Club
10; Glee Club 11,12; Cheerleader
12; Cor Jesu Staff 12; Speech
Club 12.



WILLIAM CLARE
"Nip"
"A sportsman and athlete I
strive to be, To books I have
an allergy."
Sodality 9,10,11,12; Fatima Club
10; Altar Boy 9,10,11,12; Foot-
ball 9,10,11,12; Basketball 9,10,
11,12; Baseball 9,10,11,12; Speech
Club 12.

ELAYNE BEUTLER
"Aney"
"She looks safe, but so does
gunpowder."
Sodality 9,10,11,12; Fatima Club
10; Queen's Court 11; Speech
Club 12.





JOYCE DIBBLE
"Dib"

"Never do today what you can put off 'til tomorrow."
Sodality 9,10,11,12; Fatima Club 10; Student Council 12; Speech Club 11,12; Glee Club 9,10,11,12; Class Officer 11; Academy Blarney 11,12; S. S. C. A. 11; Christmas Play 11,12; Cor Jesu Staff 12.

Seniors

MARY LOU FISHER
"Fish"

"Another Shakespeare tops the ring. With wit for writing most anything."
Sodality 9,10,11,12; Glee Club 9,10,11,12; Academy Blarney 11,12; Irish Lingo Staff 11; Speech 11,12; Journalism 11,12; Cor Jesu Staff 12; Christmas Play 12.



FRANK DENI
"Deano"

"If knowledge is wealth, behold a Rockefeller."
Sodality 9, 10, 11, 12; Fatima Club 10; Glee Club 11; Cor Jesu Staff 12; Football 9,10,11,12.



"Virgin Most Faithful,
pray for us."



MARY CONNORS
"Merry"

"A bit shy and reserved yet gracious and kind. Never a more thoughtful person you'll find."
Sodality 9,10; Fatima Club 10; Glee Club 11,12; Cor Jesu Staff 12.



JOAN FLEMING
"Joanne"

"Her laughing Irish eyes reflect her love of fun."
Sodality 9,10,11,12; Officer 9; Student Council 10; Homecoming Queen 12; Speech Club 11,12; Glee Club 9,10,11,12; Fatima Club 10; Music Convention 10; Cheerleader 11,12; S.S.C.A. 11; Christmas Play 11,12; Music Graduate 12.



ELIZABETH GRISDALE
"Betty"

"There is more in me than you know."
Sodality 9,10,11,12; Glee Club 11; Fatima Club 10; Cor Jesu Staff 12; Speech Club 12.



JOHN KAHL
"Skip"

"Who's the greatest man in the world, and why am I?"
Sodality 9,10,11; Student Council 10; Class Officer 9; Academy Blarney 11,12; Fatima Club 10; Democracy Contest 11; Football 9,10,11; Baseball 9,11; Irish Lingo Staff 11; T.B. Script Contest 11,12; Cor Jesu Staff 12.

Seniors

THOMAS McCANN
"Cannibal"

"Unlucky in cards, lucky in love, but where do I come in?"
Sodality 9,10,11,12; Fatima Club 10; Speech Club 12; Football 9,12.



RUSSELL HOFFMEYER
"Ruffy"

"The difficult I do immediately; the impossible takes a little longer."
Sodality 10,11,12; Officer 11; Fatima Club 10; Cor Jesu Staff 12; Christmas Play 12.



"Mystical Rose,
pray for us."



JOHN KENNEDY
"Johnny"

"He's full of jokes and fun galore. With witty stories by the score."
Sodality 9,10; Altar Boy 9,10,11,12; Glee Club 10; Football 9; Basketball 9.



JEAN LAPHAM
"Jeannie"

"Laughing at this, laughing at that--She always finds something to laugh at."
Sodality 9,10,11,12; Fatima Club 10; Sodality Officer 10; Co-Prefect 12; Student Council 12; Queen's Court 9; Glee Club 9,10,11,12; Christmas Play 12; Cor Jesu Staff 12; Cheerleader 11,12; S.S.C.A. 11; Speech Club 12.



SHIRLEY LANDWEHR
"Shirl"

"To have a friend, you must be one."
Sodality 9,10,11,12; Fatima Club 10; Music Graduate 12; Glee Club 9,10,11,12; Cor Jesu Staff 12.





ANN McCORMICK
"Mac"
"Small in stature, but big in heart."
Sodality 9,10,11,12; Fatima Club 10; Speech Club 12.



BLAID ANN MURPHY
"Bam"
"You know her by her quiet, studious manner."
Sodality 9,10,11,12; Fatima Club 10; Class Officer 10; Glee Club 9,10,11,12; Christmas Play 12; Cor Jesu Staff 12.



MICHAEL McKENNA
"Mick"
"Fond of fun, a heart of gold--
"He's courteous to young and old."
Sodality 9,10,11,12; Student Council 12; Altar Boy 9,10,11,12; Glee Club 12; Fatima Club 10; Football 9,10,11,12; Basketball 9; Baseball 9; Cor Jesu Staff 12.



JAMES POWELL
"Jimmy"
"His interests are in school and team--A fighting lad with lots of steam."
Sodality 9,10,11,12; Officer 9; Student Council 11; Class Officer 12; Cor Jesu Staff 12; Academy Blarney 12; Fatima Club 10; Basketball 9,11; Football 9,11; 12; Co-captain 12; Baseball 9, 10,11,12.



MARY JANE PRIOR
"Jane"
"Silence is golden, but gold is scarce."
Sodality 9,10,11,12; Officer 12; Glee Club 9,10,11; Fatima Club 10; Christmas Play 12; S.S.C.A. 11.



JOHN MURPHY
"Murph"
"A scholar and a popular man, He always does the best he can."
Sodality 9,10,11,12; Fatima Club 10; Student Council 10,11; Altar Boy 9,10,11,12; Glee Club 9,10, 11; Class Officer 10; Cor Jesu Staff 12; Football 10,11,12; Co-captain 12; Basketball 9,10,11, 12; Co-captain 12.



THOMAS RADEY
"Radar"
"I could go a long way in the world if I knew which way to go."
Sodality 9,10,11,12; Officer 12; Altar Boy 9,10,11,12; Fatima Club 10; Football 9,12; Basketball 9; Baseball 9; Cor Jesu Staff 12.

Seniors

THOMAS SWEENEY
"Stats"
"To success I've found, there's but one key--A sterling personality."
Sodality 9,10,11,12; Officer 10; Student Council 11,12; Altar Boy 9,10,11,12; Glee Club 9,10, 11; Democracy Contest 10,11, 12; Fatima Club 10; Cor Jesu Staff 12; Class Officer 11,12; Basketball 9 - 12; Salutatorian.



MARILYN QUILLEN
"Lynn"
"One in a million--a girl who listens."
Glee Club 10; Class Officer 10; Fatima Club 10; Sodality 10,11, 12.



"Mirror of Justice,
pray for us."



THOMAS RUSH
"Speed"
"Who knows what folly lurks in the mind of a genius?"
Sodality 9,10,11,12; Officer 10, 11; Co-Prefect 12; Student Council 12; Altar Boy 10,11,12; Democracy Contest 12; Music 9, 10,11; Cor Jesu Staff 12; Class Officer 9,11; Senior Play 9; Fatima Club 10; Basketball 9, 10,11; Co-captain 11; Baseball 10,11; Valedictorian.

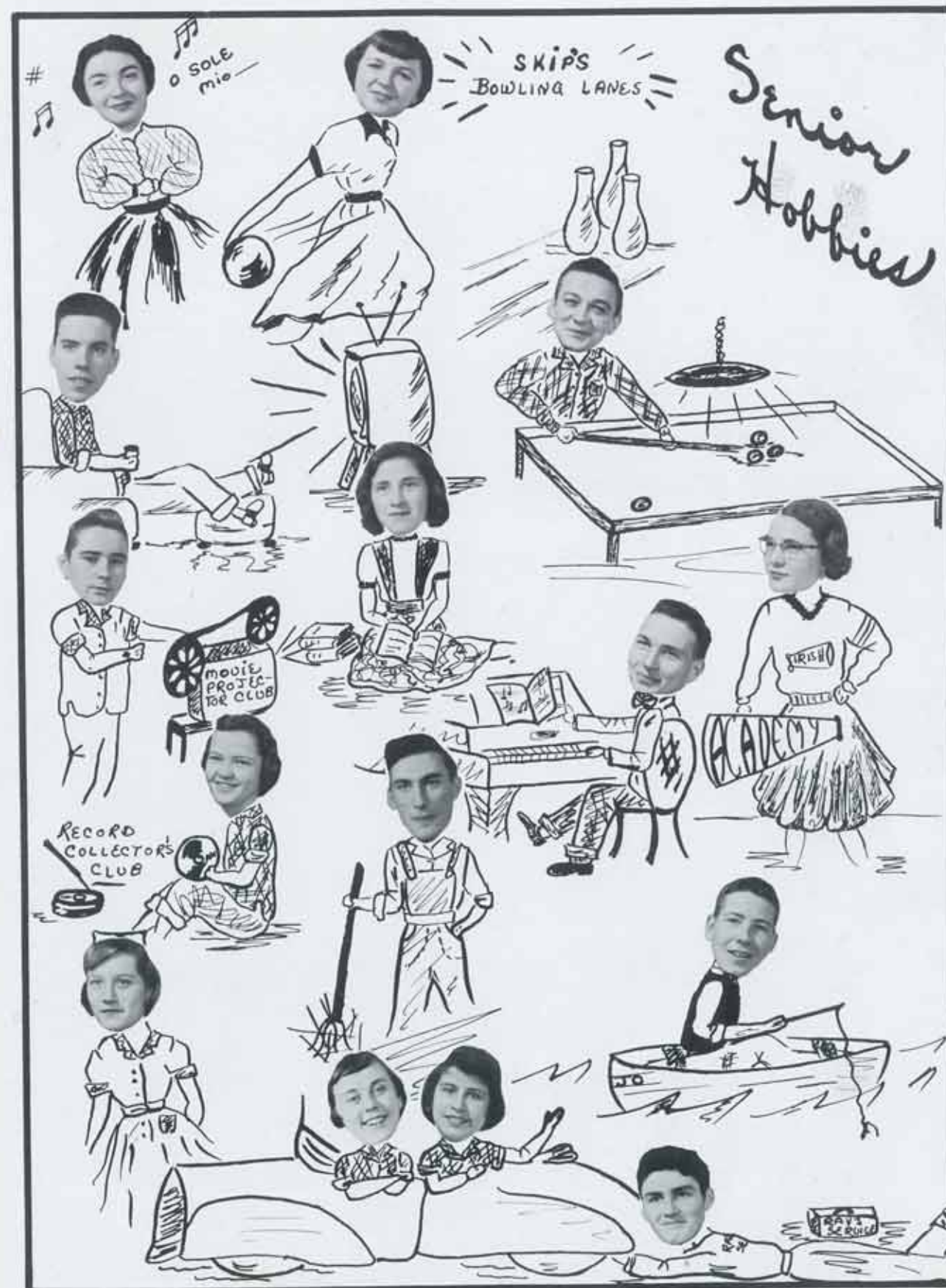


PHYLLIS THEISEN
"Phil"
"Shyness is a virtue, but virtue sometimes explodes."
Sodality 9,10,11,12; Glee Club 9,10,11; Fatima Club 10; Class Officer 12; Speech Club 12.



MARY JANE SHIPPEE
"Cruiser"
"Dark eyes are the secret of her beauty."
St. Andrew's, Saginaw; 9,10,11; Sodality 10,11,12; Glee Club 9, 10,11,12; Amplifier Staff 11; Cor Jesu Staff 12.







D. Sowle



J. Corcoran



E. Ososki



M. McGuire



J. Fabiano



V. Mattonen



B. Quinlan



K. Kipfmüller

Juniors

"Mother of Good Counsel"



A. Pety



C. English



D. Theisen



J. Verwey



M. Wejrowski



J. Breidenstein



P. Horgan



L. Wentworth



M. Murphy



J. Knapp



J. Gepford



J. Welniak



D. Mitchell



J. Corcoran



F. Cashen



R. Sowle



A. McConnell



P. Pappas



M. McCann



T. Corcoran



S. Arnold



T. O'Toole



K. Theisen



K. Martin



B. McEvoy



K. Murphy

Sophomores



L. Wezensky



K. McKenna



P. Collins



E. Pappas



"Virgin Most Prudent"



K. Hoag



B. Kane



P. Corcoran



H. Flores



B. Knapp



R. Hesch



C. Gross



M. Grisdale



L. Lapham



J. Debois



G. Donohue



S. Johnson



J. Slattery



G. Grisdale



P. Brock



J. Sowle



J. English



M. Cotter



T. Cashen



K. Breidenstein



D. Theisen



J. Hackett



W. Doerr



K. Kane



D. Donoghue



C. Pety



J. Wilmot



M. McDonald



J. Grahm



D. White



T. Rinehart



J. Theisen



M. Flores



T. Coughlin



M. Wezensky



B. Fisher

Freshmen

"Cause of Our Joy"



R. Neyer



J. Ottney



S. Harrigan



M. Wisneski



R. Gutka



V. Collin



G. Epple



G. Farnan



D. Connor



N. Theisen



E. Percha



J. Percha



J. Beltinck



M. Bruer

Student Council

Secretary R. Theisen, president T. Sweeney, treasurer B. Quinlan, and vice-president M. McKenna discuss plans for better student government during officer's meeting.



Senior Council representatives: J. Dibble, J. Lapham, F. Deni, and T. Rush.



Senior class officers E. Berg, P. Theisen, T. Sweeney, and J. Powell direct financial and social class projects.

Speech



7B Script Contest

Mary Lou Fisher, winner of first State prize; Joan Fleming, chairman; John Kahl, local contestant; Joyce Dibble, honorable mention; Ruth Anne Sowle, second State prize winner.



Thomas Rush



Democracy Contest

Thomas Ruth, one of the five Academy contestants, won second place in the District Contest, I Speak For Democracy. (below) Father Lord and Jean Lapham exchange ideas at Chicago's S.S.C.A.



Cor Jesu

Precision work keeps lay-out trio busy--
Esther Berg, Tom Rush, and Rosilyn Thei-
sen.



Business managers Jean Lapham, Tom Radey,
Jane Shippee, and Betty Grisdale check Cor
Jesu subscribers.

Editor Joyce Dibble, co-editors Mary Lou
Fisher and Blaind Murphy.....



Staff

Staff typists Mary Connors, Donna
Wishmeyer and Beverly Campbell
(not pictured) complete deadline
assignments.



..... and sports editors John Kahl, James
Powell, and John Murphy check lay-out
plans.



Shirley Landwehr, Joan Fleming, Tom
Sweeney, Mike McKenna, and Russ Hoff-
meyer, advertising managers, initiate the
annual ad campaign.

Classes Seniors

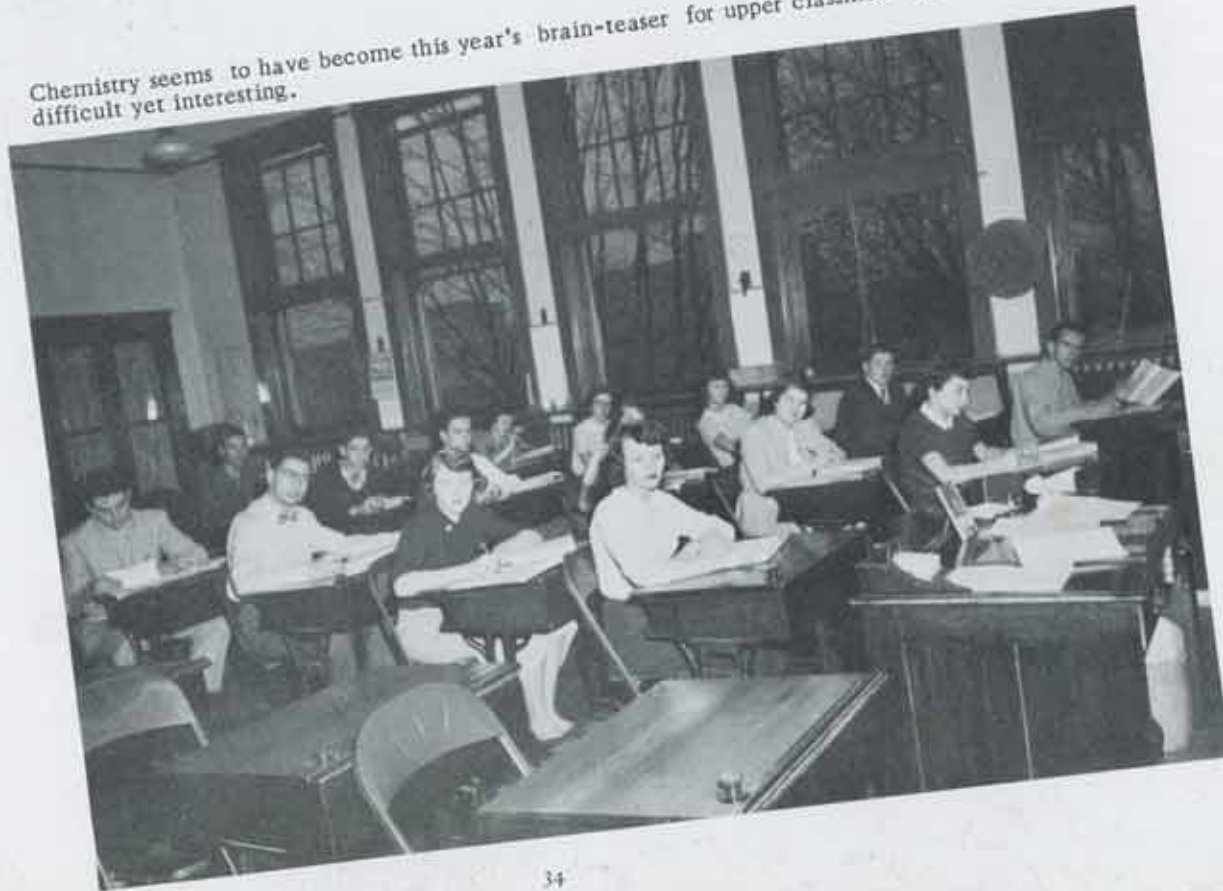


Amazement reigns as bewildered speech students listen to play-back of their unfamiliar voices.

Members of Speech Club, a weekly featured event of senior English class, illustrate the art of public speaking.



Chemistry seems to have become this year's brain-teaser for upper classmen who find the science difficult yet interesting.



Juniors Sophomores



The photographer snapped these junior class officers and Council representatives as they were getting together for a meeting.

Relaxed sophomores enjoy a literature class.



Junior lasses, future secretaries, take daily dication.



Sophomores Freshmen

Sophomore class officers and Council representatives, R. Hesch, R. Kane, S. Arnold, K. Theisen, M. Grisdale, and E. Pappas, enroute to a business meeting, a few weeks before their big party, The Sophomore Shuffle.



Freshman officers, too, make big plans for a Church Unity Octave Sodality program.



A section of the freshman biology class stop to pose for the photographer during a demonstration by Tom Rinehart.



Girls' Glee Club



Junior-Senior Group

(left to right) B. Murphy, M. Connor, J. Fleming, J. Radey, R. Theisen, M. Cotter, J. Dibble, K. Kipfmuehler, J. Shippee, D. Wischmeyer, B. Campbell, R. Sowle, S. Landwehr.



Freshman-Sophomore Group

(left to right) 1ST ROW: V. Collin, M. McDonald, M. Wisneski, M. Grisdale, J. Percha. 2ND ROW: H. Flores, M. Flores, P. Collin, K. Kane, K. Breidenstein, J. Hackett, P. Brock. 3RD ROW: S. Johnson, K. McKenna, J. English, K. Hoag, S. Arnold, J. Slattey, K. Theisen.

ROSILYN THOMSEN
An accomplished pianist and accompanist, Rosilyn has studied music at the Academy for the past seven years.

L'AMOUR



SHIRLEY LANDWEHR
Shirley, a lover of both classical and popular music, has also served as assistant organist.



JOAN FLEMING
A student of piano for eight years, Joan displays lively artistic ability.

Music Graduates

Athletics



Gridiron



Gladiators

Senior



FRANK DENI
Fullback



MIKE McKENNA
Tackle

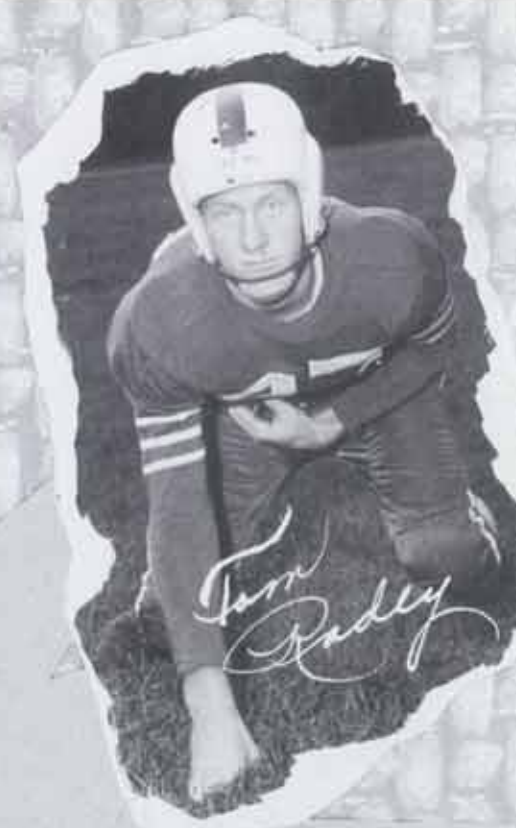


JIM POWELL
All-conference Guard



TOM McCANN
Halfback

Standouts



TOM RADEY
Tackle



JOHN MURPHY
All-conference Quarterback



BILL CLARE
Center



"Here's how it's done."

SHA 20; Holy Rosary Saginaw 0

Despite a heavy rain which hampered the usually effective Irish passing attack, the Academy pounded out a 20-0 victory over Holy Rosary by way of a potent ground attack. Quinlan and Cashen were the big guns on the Academy offense as they ripped off 217 of the 240 net yards gained by the Irish.

A last-minute spurge of completed passes was the only threat the Greyhounds offered all afternoon. Dave Sowle, Conrad English, and Jim Powell were outstanding on defense as they snuffed out each threat with sure, sharp tackling.

"Catch me if you can."



SHA 25; St. Mary's Flint 6

After dropping the season's opener to St. James Bay City 26-13, the Irish broke into the win column with a 25-6 victory over a hapless St. Mary Flint squad. It took the Irish just eight plays to rack up the first of four touchdowns.

Murphy's passing netted 102 yards while Quinlan, Cashen, and Company pounded out 104 yards on the ground. The scoring chores were well divided as Murphy, Jim McKenna, Frank Deni, and Dave Sowle each hit pay dirt once. Cashen converted one extra point in four attempts.



"Quinlan Express."

SHA 20; Beal City 0

The Irish continued their winning ways by trouncing their favorite cousins, the Beal City Aggies, 20-0 on rain and snow-swept Fancher Field.

Shifty Bill Quinlan led the Irish scoring parade as usual with two touchdowns and provided the other tally in the third quarter on a 26-yard ariel from quarterback John Murphy. Fred Cashen scored two points by way of place kicks. This marked the fifth consecutive shutout victory for the Academy over Beal City during the five-campaign series between the two schools.



"Meet you at the goal line, Fred."

SHA 32; St. Jones Essexville 19

The Irish struck lightning-like thrusts as Quinlan ran back the opening kickoff 97 yards for the first of two quick touchdowns by the Irish. The second came after Cashen recovered a fumble on the first play after the quick second kickoff. On the second play Dave Sowle took a 51-yard pass from John Murphy to score standing up. But an undiscouraged St. John's came back to score from the one-yard line early in the second quarter. Then Murphy threw 28 yards to Quinlan as the half ended with the score 20-7 in favor of Academy. Cashen made two of three conversion attempts.

Late in the third period Murphy tossed 41 yards to Quinlan who ran the remaining 23 to score; St. John's tallied on a 10-yard pass to bring the score to 26-13. In the fourth period Deni and Cashen combined to drive 60 yards to pay dirt with Cashen going over from the four. St. John's then completed two passes of 34 and 23 yards to score the final points in a game in which Powell, English, and Fabiano stood out on defense for the Irish along with Mike McKenna.

"Follow me, Bill."



SHA 13; St. Paul's Owosso 0

Bill Quinlan's long touchdown-runs of 84 and 53 yards sparked SHA to victory over a big and determined St. Paul's team. Quinlan's first touchdown came late in the third period after a hard fought and scoreless first half, which saw both lines play exceptional defensive ball. Fred Cashen's try for the extra point was blocked and Sacred Heart led 6-0.

Late in the fourth period Owosso moved to the 13-yard line before Cashen's interception stopped the drive, and two plays later Quinlan went 84 yards to make it 13-0 as Cashen booted the extra point.

In the line, Dave Sowle, Jim Powell, Bill Clare, and Jim McKenna were outstanding for SHA.



"Hang on Murph; we're coming."

SHA 19; St. Marys Saginaw 19

Out to avenge last year's beating at the hands of the Maroons, the Academy turned on the heat at the beginning of the game to hold a 6-0 edge at the end of the first quarter. The St. Mary passing attack then rolled into high gear as Denny Troester connected to Ron Rupert for the first Maroon counter. Troester hit Woodcock for the extra point to put the Maroons in front 7-6. A poor pass from center enabled the Academy to score again before the end of the first half!

Woodcock, attempting to punt from his own 23, was foiled when the pass from center sailed over his head into the end zone; he managed to worm his way back to the 8 before being tackled. Quinlan reeled off two more touchdowns to wrap up scoring honors. St. Mary's scored twice on sleeper plays which fooled Irish defenders completely.

Irish Bucket Brigade

The fighting Irish basketball team got off to a slow start against some of the highly rated class C schools in the state. These teams, Remus, Harrison, and St. Mary's Saginaw, proved too much for the football-minded Academy sportsmen. But Sacred Heart showed its fighting spirit by downing West Branch and sneaking by Essexville St. John's in a slugfist battle. They then employed the two-platoon system against Bay City Visitation whom Academy white-washed by a score of 86 to 54 with senior Bill Clare scoring 14 points for the evening. Coach John Murray still has hopes to retain the class D District trophy which his boys won in '52.



MURPHY



KANE



OSOSKI



CLARE



McKENNA

QUINLAN



SWEENEY



DAVE SOWLE



ENGLISH



Irish Basketeers

Sacred Heart Academy's varsity composed of three seniors, five juniors, and one freshman, is coached by John Murray. Senior John Murphy, a regular guard on the squad, is the leading scorer with a 13-point average. Tom "Rangy" Sweeney, one of the midgets on the team, stands 6 ft. 4 in., and is the first string center. Another senior, Bill Clare is the globetrotter-type, the clown, and the life of the team. Bill "Handsome" Quinlan, regular guard, is popular on and off the court. Dave Sowle, the serious boy on the squad, is truly an Irishman. Jim McKenna has been called the "most reliable" because of his spirit and desire to win. Conrad "Hoagy" English is another high-spirited substitute for the Irish. Jack Sowle, the only freshman on the team, is showing the older men how. Joe Fabiano is a junior forward brought up from the junior varsity.

FABIANO



Irish Varsity



Little Irish



Hardwood Heroes

Scoreboard

S. H. A.

OPPONENTS

28	Harrison	52
53	Remus	68
35	St. Mary's Saginaw	68
68	West Branch St. Joseph	37
52	Essexville St. John's	48
52	Bay City St. Mary's	60
87	Bay City Visitation	56
47	Harrison	62
56	Bay City St. Mary's	65
56	Remus	76





Jim Powell
Outfield

Bill Quinlan
Catcher

Tom Rush
First Base

Ed Ososki
Outfield

Bill Clare
Outfield

Diamond Doings



Social



Queen and Her Court



Marianne Grisdale, Dianne Theisen, Queen Joan Fleming, Rosilyn Theisen, and Judy Slattery.

Senior Joan Fleming and her quadral court were stellar attractions at Sacred Heart Academy's Homecoming October 5, 1952.



. Homecoming Stars



Dianne Theisen
Junior



Judy Slattery
Freshman



Marianne Grisdale
Sophomore



Queen, Joan Fleming
Senior



Rosilyn Theisen
Senior

Star of the Sea,

pray for us

Homecoming Parade



Floats vieing for first place helped to draw a king-sized crowd for royal festivities.



..... Dance Hotel Chieftain



Joseph English, Athletic Association President, crowns Joan Fleming, Academy's Homecoming Queen at the annual autumn ball.





Homecoming the Big Weekend



J-Hop



Cor Jesu Patrons

REV. L. J. FARQUHARSON
REV. W. F. JUDE
REV. FRANCIS KARL
MR. AND MRS. EDWARD BERG
FLOYD CASNER
FLORENCE CAMPBELL
MR. AND MRS. JOHN L. DIBBLE
R. J. DONDERO
MRS. EMMETT FITZPATRICK
FOX BARBER SHOP
FRESHMAN CLASS
GOULD'S REXALL DRUGS
TOM GRISDALE
MR. AND MRS. R. HOFFMEYER
JUNIOR CLASS
MR. AND MRS. WM. LANDWEHR

LOG CABIN RECORD SHOP
MR. AND MRS. FRANK McCORMICK
JAMES R. McNAMARA
AGNES AND THERESA MURPHY
MR. AND MRS. JOHN T. MURPHY
OLYMPIA RESTAURANT
ONE-MINTUE LUNCH
MR. AND MRS. JOE OTTNEY
OUR LADY'S SODALITY
MR. AND MRS. ERNEST PRIOR
MR. AND MRS. JAMES RADEY
GEORGE SCHEID
SENIOR CLASS
SOPHOMORE CLASS
VAN'S MODEL BAKERY
MR. AND MRS. W. WISCHMEYER



J-Hop

Committee Chairmen



J-Hop



Senior Prom



Athletic Banquet



Assistant Coach, Tom Janack, receives gift from Mike McKenna, Jim Powell, and John Murphy, representing the teams.



Patron Advertisers

AMERICAN CLEANERS
Corner of Broadway & Kinney
Phone 34-261

BELLE'S HAT SHOP
Gloves-Hats-Hose-Purses
205 E. Broadway

COMPLIMENTS OF THE
BENNETT
Mt. Pleasant

BETHEL'S BEAUTY SHOP
1027 S. Arnold Street
Phone 21-411

BEUTLER SERVICE
GAS & OIL
Rosebush, Michigan

"BILL" MURRAY'S TIRE SERVICE
120 S. Fancher
Mt. Pleasant, Michigan

Congratulations,
Seniors!
BREIDENSTEIN'S GROCERY

HOTEL CHIEFTAIN
Delicious Food-Pleasant Rooms
Mt. Pleasant, Michigan

CLABUESCH WALGREEN DRUG STORE
FOUNTAIN SERVICE
110 E. Broadway

CLARENCE THEISEN'S SERVICE STATION
Dial 25-681
629 S. Mission

Compliments of
THE COLLEGE-TOWN SHOP
(formerly Bishop's)

Congratulations, Seniors!
CRYSTAL ICE CO.
Corner of Pickard & Kinney

COLLIN FARMERS SUPPLY
Fertilizer-Feeds-Seeds-Lime
Mount Pleasant

CONSUMERS POWER CO.
204 E. Broadway
Mt. Pleasant, Michigan

E. L. CONRICK, INC.
Dry Goods, Ready-to-wear
Phone 23-591

COTTON ELECTRIC COMPANY
Radio Repair
117 N. Main Street

DuHAMELS
601 N. Fancher
Groceries-Meats-Produce-Ice Cream

ELMORES
Furniture-Paint-Wallpaper
512 S. Mission

ENTERPRISE PRINT SHOP, INC.
Commercial Printers
119 S. Franklin

ERVIN ELECTRIC
Appliances-Radio-Television
112 Court St., Phone 31-611

FLEMING STUDIO & CAMERA SHOP
Gifts-Greeting Cards-Cameras
209 E. Broadway

FRANK SPAGNUOLO
Candy-Groceries
120 S. Main Street

GAMBLE STORES
Coronado Appliances
120 S. Main Street

GIANT SUPER MARKET
N. Mission Street
Mt. Pleasant

Good Luck, Seniors!
FORTINO FOOD MARKET
416 N. Mission

THE GRILLE
Better Food
117 S. Franklin

GIBSON'S GROCERY
724 E. Broadway
Groceries-Meats-Frozen Foods

Compliments of
HALS TOTS 'N TEENS
Everything for Children

HONEYWELL'S SUPER MARKET
Groceries and Meats
712 South Mission

BUD HUBBLE MOTOR SALES
Chrysler-Plymouth Dealer
105 N. Mission

Professional

DR. WM. HARRIGAN, M. D.
412 E. Broadway

DR. FRED SCHALL
Optometrist
119 S. College

DR. JOSEPH SWEENEY, D. D. S.
123 S. College